

JORNADA INFORMATIVA: AMPLIAR LA PARTICIPACIÓN Y DIFUNDIR LA EXCELENCIA

## Widening: Ventajas para la participación de entidades de países no widening y claves de éxito



Patricio Ortiz de la Torre  
European Research Executive Agency  
Head of Sector - Unit REA.C3: Widening participation

# RESPONSIBILITIES OF THE REA



## EU PROGRAMMES' IMPLEMENTATION

- Horizon Europe
- Horizon 2020
- Research Fund for Coal and Steel
- Promotion of agricultural products



## SUPPORT SERVICES

- Evaluation support
- Participant validation\*
- Handling of expert evaluators
- Research Enquiry Service

\*Calls for tenders & calls for project proposals

# EUROPEAN RESEARCH EXECUTIVE AGENCY IN NUMBERS

IMPLEMENTING SEVEN HORIZON EUROPE AND TWO OTHER EU PROGRAMMES<sup>1</sup>  
WITH €22.7 BILLION<sup>2</sup> FROM 2021 TO 2027 IN PARTNERSHIP WITH 7 COMMISSION SERVICES

●  
DG Research and Innovation

●  
DG Education, Youth, Culture and Sport

●  
DG Agriculture and Rural Development

●  
DG Communications Networks, Content & Technology

●  
DG Migration & Home Affairs

●  
DG Environment

●  
DG Employment, Social Affairs and Inclusion

## Horizon Europe



## Other EU programmes

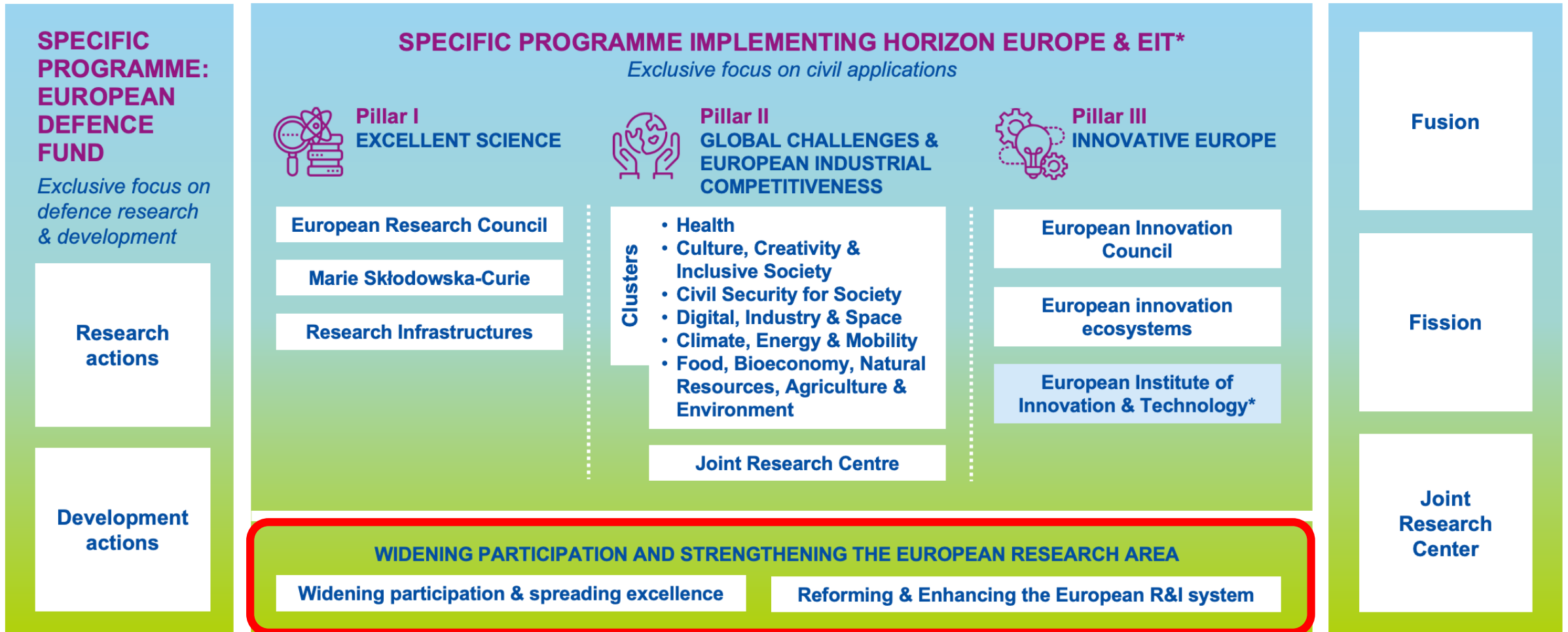


<sup>1</sup>in addition to ongoing Horizon 2020 projects  
<sup>2</sup>figures are rounded

# Horizon Europe contributing towards a renewed ERA

## HORIZON EUROPE

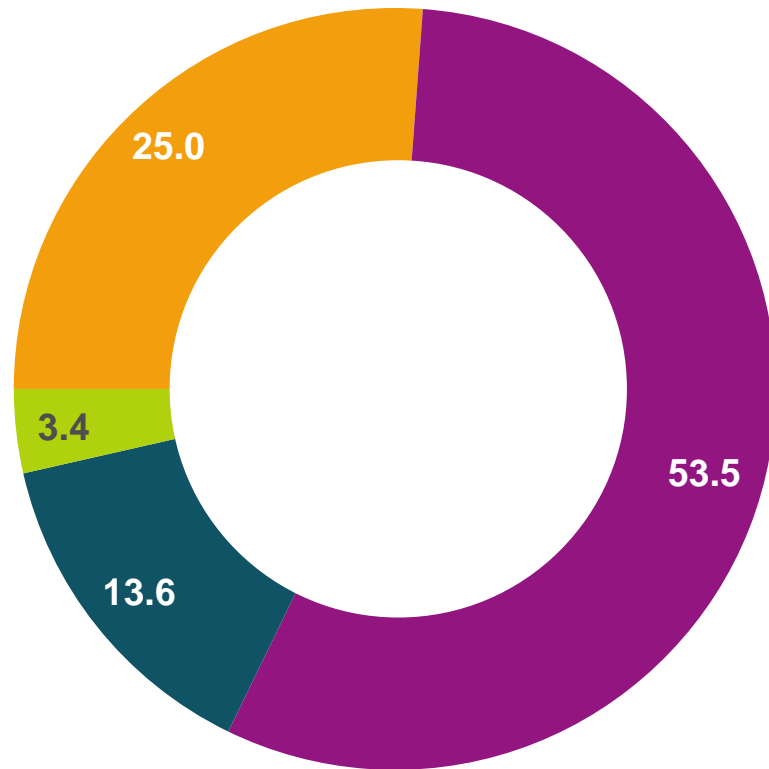
## EURATOM



\* The European Institute of Innovation & Technology (EIT) is not part of the Specific Programme

# Horizon Europe Budget: €95.5 billion (2021-2027)

(including €5.4 billion from NGEU – Next Generation Europe – programme of EU for Recovery from COVID-19 crisis)



## Political agreement December 2020

*€ billion in current prices*

- Excellent Science
- Global challenges and European ind. comp.
- Innovative Europe
- Widening Part and ERA

# Novelties for Widening under Horizon Europe:

- Full alignment with **new ERA strategic priorities**
- **Research cost for CSA eligible** under Teaming, Twinning and ERA Chairs
- More emphasis on **developing research management capacities**
- Full implementation of “**Advancing Europe**” package with a number of additional support schemes to boost participation of less research performing countries
- **Continuation of core widening instruments** Teaming, Twinning and ERA Chairs with some improvements in response to lessons learnt
- New **initiatives for excellence** in universities and innovation ecosystems
- Enhanced and more diversified actions for **brain circulation**
- **Full integration of COST** under widening, 80% of actions must have significant widening dimension
- More integrated policy approach and **enhanced synergies** with regional policy, transnational missions, regional smart specialisation strategies etc.
- **Fixed list of eligible Member States** to host the main beneficiary (EU13 + PT + EL) + Associated Countries
- **EU Outermost Regions** fully eligible to host the co-ordinator

# WIDENING Countries



## Low RDI Performing" or "Widening" Countries:

- **15 MS:** Bulgaria, Croatia, Cyprus, Czech Republic, Estonia, Hungary, Latvia, Lithuania, **Luxembourg**, Malta, Poland, Portugal, Romania, Slovakia and Slovenia, **Greece**
- **15 AC:** Albania, Armenia, Bosnia and Herzegovina, Faroe Islands, North Macedonia, Georgia, **Kosovo**, Moldova, Montenegro, **Morocco**, Serbia, Tunisia, Turkey and Ukraine (**subject to association agreements**)
- **9 Outermost regions:** Guadeloupe, French Guyana, Martinique, Mayotte, Réunion, Saint-Martin (France); Azores and Madeira (Portugal); Canary Islands (Spain);



HORIZON EUROPE

# Widening actions in HE

- Support activities
- Encouraging reforms, changes
- Building the necessary R&I capacity
- Expand transnational collaboration scale
- Making R&I systems stronger





# Widening Participation & Strengthening the European Research Area (ERA):

## Widening Participation and Spreading Excellence

- Teaming
- Twinning
- ERA Chairs
- COST
- Support to NCPs, pre-proposal checks and advice
- Brain circulation
- Excellence initiatives:
  - Excellence Hubs
  - European Excellence Initiative for Universities
- Hop-on

€ 2,96 billion

## Reforming and enhancing the European R&I system

- Scientific evidence & foresight
- Support to the ERA development
- Support to national R&I policy reform, including Policy Support Facility
- Attractive researcher careers
- Open science, citizen science and science communication
- Ethics and integrity
- Gender equality
- Support to dissemination & exploitation
- Support to international cooperation

€ 0,44 billion

# Widening participation and strengthening the ERA WP

- **Destination #1:** Improved access to excellence
  - Teaming
  - Twinning (incl. special call WBC)
  - Excellence Hubs
  - European Excellence Initiative for Higher Education Institutions
  - Hop-on facility
  - (under other actions) COST and NCP networks
  
- **Destination #2:** Attracting and mobilising the best talents
  - ERA Chairs
  - Fostering balanced brain circulation: ERA Fellowships
  - Fostering balanced brain circulation: ERA Talents
  
- **Destination #3:** Reforming and enhancing the EU research and innovation system 2021-2024

# Destination #1: Improved access to excellence

**Objective:** to create a portfolio of complementary actions that will **build R&I capacities** in Widening countries enabling them to advance to the **competitive edge at European and international level.**

## **Main impact:**

- Increased **science and innovation capacities** for all actors in modernised and more competitive R&I systems in widening countries
- **Reformed institutions** and increased **attractiveness for talents**
- Higher participation **success in Horizon Europe** and more consortium leadership roles
- Stronger linkages between **academia and business** and improved career permeability
- Strengthened role of the **Higher Education sector** in research and innovation
- Better involvement of **regional actors** in R&I process
- Improved outreach to **international** scale for all actors

# TEAMING

**Policy objective**: develop light houses and role models to stimulate **reforms of national R&I system**, increase **level of excellence** of national R&I system, **mobilise new investments**

**Scale of operation**: single **Centre of excellence to be modernised or created**, relevant at national level, in a **chosen scientific domain**

## **How:**

- A large CSA grant (**€ 8 to 15 million**) + equivalent (obligatory) **complementary funding**,
- a single application in a **two-stage** evaluation procedure; joint evaluation of all funding sources,
- consortium structure - **main beneficiary** (university or a research organisation, a national or regional authority or a research funding agency), **+ 1 or 2 strategic advanced partners** (universities or research organisations) from a different country .

## **Synergies with Cohesion policy funding enabled (new GBER and CPR references):**

- Horizon Europe rules on eligible costs, activities and funding rates apply to the aid,
- Total public funding (EU + State aid) up to same funding rate of Horizon Europe,
- Investments costs in project-related tangible and intangible assets shall be eligible

# TEAMING stage 1

## HORIZON-WIDERA-2021-ACCESS-01-01

### Call Overview

**Proposals submitted: 116**

**Inadmissible: 1**

**Proposals to evaluate: 115**

**Indicative budget: € 180 million**

**Overall requested contribution: € 1,592 billion**



# TEAMING stage 1

## HORIZON-WIDERA-2021-ACCESS-01-01

**05 October**  
Call deadline

**Evaluation:**  
**18 October to 15 November**  
Remote evaluation (IERs)

**10 November to 15 December**  
Draft Consensus Reports (by Rapporteurs)

**10 November to 13 December**  
Remote Consensus meetings

**12 January 2022**  
Defrieffing meeting and proposal ranking

- Beginning **February 2022** – Results to applicants & Opening Stage 2
- Deadline **Stage 2: 8 September 2022**
- Start of projects from **May 2023**



# TWINNING

**Policy objective**: strengthen a defined field of research in a **university or research organisation** by linking it with **at least two leading research institutions** in other Member States or Associated Countries in the chosen scientific domain.

## **How:**

- [HORIZON-WIDERA-2021-ACCESS-03](#): **€ 149 million** – deadline 18/01/22
- CSA grant (**up to 3 years and € 0,8-1,5 million**) involving the coordinator established in an eligible country,
- comprehensive scientific strategy for stepping up and stimulating scientific excellence and innovation capacity in a **defined area of research**,
- clear outline of the **scientific quality of the partners** involved,
- **dedicated work package** or task focused on strengthening the **research management** and administration skills of the coordinating institution,
- research, consumables and small equipment costs become **eligible (Max 30% & 70% COO)**

**Scale of operation**: Set of activities include some of the following: short-term staff exchanges; expert visits and short term on-site or virtual training; workshops; conference attendance; exploratory research project, organisation of joint summer school type activities; dissemination and outreach activities.

# Twining Western Balkans

## HORIZON-WIDERA-2021-ACCESS-02-01

### Call Overview

**Proposals submitted: 128**

**Inadmissible: 2**

**Proposals to evaluate: 126**

**Indicative budget: € 21 million**

**Overall requested contribution: € 173,4 million**





# Twining Western Balkans

## HORIZON-WIDERA-2021-ACCESS-02-01

**05 October**  
Call deadline

**Evaluation:**  
**20 October to 5 November**  
Remote evaluation (IERs)

**8 to 22 November**  
Draft Consensus Reports (by Rapporteurs)

**26 November to 13 December**  
Remote Consensus meetings

**20 December**  
Panel meeting and proposal ranking

**End of January 2022**  
Results to applicants  
Grant Agreement Preparation of successful proposals



# NEW: Networks of HEIs - [HORIZON-WIDERA-2022-ACCESS-05](#)

**Policy objective:** amplifying reform of R&I ecosystems, through cross-border collaboration of higher education institutions, engaging in institutional changes

**Scale of operation:** (new or existing) integrated networks of higher education institutions from widening and non-widening countries, developing common R&I strategies and sharing practices on specific areas of institutional change

**How:** Coordination and Support Action (up to 3 years) € 1,5 - 2 million grant - € 30 million – deadline 04/11/21

## **Target group:**

- Consortia of at least two higher education institutions from one or more Widening Country(ies) and at least two internationally-leading higher education institutions from two different Member States or Associated Countries (non-widening).
- With partner organisations from *surrounding ecosystems* (business, public actors,...)

# NEW: Networks of HEIs

## Expected impact:

- Integrated and **longer term cooperation** between the higher education institutions (**HEI**), and with the partners in their **surrounding ecosystem**
- **Raised excellence profile** of the HEI from the Widening country and of its **staff**
- Tangible progress in **institutional transformation**, including through pilots and case studies
- Contribution to a portfolio of successful **cooperation models for transformation** towards more **inclusive, excellent, open, connected, globally competitive** higher education institutions
- Preparation of networks to embark on the future European Universities Initiative

## Synergies with European Education Area:

- Further roll-out of European Universities Initiative, currently being co-created
- European Excellence Initiative contributing (post-2022)
- Key features: inclusive excellence in education, research, innovation, service to society; raising global competitiveness of HEIs

# **NEW: Excellence Hubs** - [HORIZON-WIDERA-2022-ACCESS-04](#)

## **Target groups:**

- Placed based **Innovation ecosystems** based on the **quadruple helix model** (research institutions, firms, regional/local authorities, societal actors)

## **Objective:**

- Develop **innovation excellence in a regional context** in widening countries
- Strengthen linkages between **science and business**
- Elaborate **cross border strategic R&I agendas**
- Mobilise **investments**

## **Expected impact:**

- **Excellent innovation ecosystems** in widening countries in relevant domains of cutting-edge science and innovation
- **Long term joint R&I strategies** underpinned by concrete **action plans**
- Common **investment plans** for R&I including infrastructures leveraging **funds and investments** in a synergetic manner

# NEW: Excellence Hubs

## How:

- CSA grant (4 years) € 3 to 5 million - € 50 million – open 04/11/21 - deadline 15/03/22
- consortium structure: **at least two quadruple helix ecosystems from two different countries**
- No advanced partner, non-widening partners accepted as long as **co-ordination and center of gravity (at least 70% of budget) remains in widening** countries
- **Mandatory** participation of **established business** partners

## Content:

- **Cross-border joint R&I strategy** aligned with strategic priorities
- Joint R&I project consolidating **academia business linkages**
- **Action and investment plan** for implementation of the strategy
- Conceptual design and pre-planning for **pilots and demonstrators** (if applicable)
- **Accompanying measures** e.g. to raise visibility, citizen engagement, technology transfer, entrepreneurship training, staff exchange, mutual learning etc.

# COST

**Policy objective:** to give opportunity to widening countries to get involved in European and international research initiatives and to benefit from exposure to leading scientists in their field. In HE COST will become an integral part of the Widening part with ambitious set of KPIs (at least 50% of the budget at the benefit of widening countries, 80% of actions with significant widening dimension); strengthen innovation dimension and better synergies with other widening actions.

**Expected impact:**

- increased participation of widening countries in European research activities and higher success rates
- networking and brain circulation in line with ERA principles

# NCP NETWORK for WIDENING and ERA

**Policy objective:** Reduce disparities in research performance and facilitate the trans-national co-operation between NCPs, bridge the knowledge gap and help the less experienced entities from widening countries and regions to rapidly acquire know-how, provide better service to applicants taking into account the diversity of actors in both the Widening and ERA parts.

## How:

- CSA to named beneficiary it may include financial support for third parties (FSTP)
- Continuation of NCP WIDENET in a significantly up-scaled format
- Effective support structure will be established to assist and support the potential clients in submitting proposals to the widening part of Horizon Europe, including professional pre-proposal checks and advice.

**Scale of operation:** The implementation will be carried out **in work packages distinguished for Widening and ERA part** of the programme.

# HOP ON FACILITY

**Policy objective: mobilise excellence** in the Widening countries, **increase visibility** of the participants from the Widening countries, improve **knowledge circulation**, and **reduce lack of participation** of the Widening countries in specific **thematic domains**. Contributes to achieving the **Inclusiveness ambition** of the future ERA policy by involving research institutions from Widening countries in Horizon Europe Pillar 2 actions.



**Call: [HORIZON-WIDERA-2022-ACCESS-07-01](#)**

**Type of action:** RIA

**Opening:** 27 Jan 2022 – **Cut-Off dates:** 20 Apr 2022; 10 Nov 2022

**Indicative budget** (EUR million): 40.00

**Expected EU contribution per project** (EUR million) 0,2 to 0,5

**Expected number of projects to be funded:** 80



# HOP ON FACILITY

---

## Who:

- Legal entities from low R&I performing Member States **join already selected collaborative R&I actions**, subject to the **agreement** of the respective **consortium**.

## How:

- proposal must be **submitted by the co-ordinator** of a consortium funded **under Pillar 2** of Horizon Europe with a **valid grant agreement** that does **not have** any participant from a country eligible to host the co-ordinator under the Widening component (**Widening country**).
- Main selection criteria are **excellence and added value of the new partner** performing a relevant additional task in the project,
- The accepted application will trigger a **GA amendment** with the service in charge of the related topic.



# Destination #2: Attracting and mobilising the best talents

## Main impacts:

- Inciting **institutional reforms** in research institutions in widening countries
- Better use existing **research infrastructures** and populate them with **excellent talents**
- **Attract first-class talents** and turn them into game changers in institutions
- **Revert brain drain**
- Improved linkages between **academic and business**, notably by overcoming sectoral barriers
- **Free circulation of knowledge and expertise** in line with ERA priorities

# ERA CHAIRS - HORIZON-WIDERA-2022-TALENTS-01-01

**Policy objective**: to increase in number of R&I talents moving to host organisations in Widening countries and the **research excellence** of the institution in the specific field covered by the ERA Chair holder

## **How**:

- CSA grant (**up to 5 years** and **€ 1,5 - 2,5 million – € 80 million**) involving the coordinator established in a widening country,
- request for **CV of candidates** to ERA Chair positions in proposals,
- **creation of a research group** in the chosen scientific field under the authority of the ERA Chair with **open recruitment procedures**;
- ERA Chair holder research team: appointment of team members must follow **an open, transparent and merit-based recruitment process** with **no more than 50%** of the team appointees having **previous contractual links with the coordinator**
- research, consumables and small equipment costs become eligible (**research costs up to 10% of the EU contribution**).

# Fostering Balanced Brain Circulation

**Policy objective**: to attract more R&I talents to Widening countries, part of the wider ERA policy initiative on nurturing talents

**Target groups**: researchers, research facilitators, innovators,... (diverse audience), moving or returning to host organisation in a widening country and host organisations located in widening countries.

## **How:**

1. ERA Fellowships – follow up of the Widening Fellowships pilot, builds on the MSCA Postdoctoral Fellowships
2. ERA Talents – providing competitive grants for training and career development, promoting diversity of PhD careers, spreading attractive working and employment practices (*pending outcome of an ongoing study on brain circulation*)

## Comparison of key characteristics widening actions

Actions in WP	Consortium structure	Target group and scale of operation	Policy objectives
Teaming	Main beneficiary + 1 or 2 strategic advanced partners	Single centre of excellence to be modernised or created, relevant at national scale	Develop light houses and role models to stimulate reforms of national R&I system, increase level of excellence of national R&I system, mobilise new investments
Twinning	Main beneficiary and focused network of partnering organisations	Individual institutions and small network of advanced partnering institutions. Institutional scale with European outreach	Develop excellence in a chosen R&I domain for the main beneficiary with the help of twinning partners, increase visibility of main beneficiary and upskill its staff
ERA Chairs	Mono-beneficiary host organisation with optional single partner organisation	Excellent individuals and their teams, institutional scale	Excellent scientists and their teams to become game changers at institutional level, develop new research strands and raise level of excellence
Excellence hubs	Group of 2 or 3 placed based innovation ecosystems based on the quadruple helix approach	Research institutions, firms, local/regional government, societal actors, local regional scale with cross border dimension	Foster innovation excellence in place based (local/regional) innovation ecosystems, improve science business linkages, regional dimension of widening, <b>bottom-up approach</b>
Excellence Universities	Network of European Universities, co-ordinates by university from widening country	Universities at European Level	Support transformation of HE institutions towards excellence and international profile

# Oportunidades

## ✓ Horizonte Europe:

- ✓ Islas Canarias

- ✓ Como beneficiario avanzado: vecinos y otros contactos europeos

## ✓ Alianza universidades

- ✓ Twinning (+WB): 18/01 cierre + 120 nuevos proyectos

- ✓ ERA Chairs: 15/03 cierre + 30 nuevos proyectos

- ✓ Excellence Hubs: 15/03 cierre + 10 nuevos proyectos

## ✓ Teaming:

- ✓ 24 CdE en marcha: Publicación de puestos investigadores

- ✓ 12 nuevos CdE en 2023

---

HORIZON EUROPE

# Tips for proposal writers



# Key principles



Your proposed work must be within the scope of a work programme topic



You need to demonstrate that your idea is ambitious and goes beyond the state of the art



Your scientific methodology must take into account interdisciplinary, gender dimension and open science practices. It must not significantly harm the environment



You should show how your project could contribute to the outcomes and impacts described in the work programme (the pathway to impact)



You should describe the planned measures to maximise the impact of your project ('plan for the dissemination and exploitation including communication activities')



You should demonstrate the quality of your work plan, resources and participants



# Tips

- Partner search via the call page
- Read carefully proposal template and follow template structure and guidance to ensure you address each evaluation sub-criteria
- Respect the page limit
- Consistency between Part A and Parts B of proposal
- Submit on time do wait until the last day
- General principles: No negotiation
- **Ethics** and security scrutiny are based on a self-assessment included in the proposal (Part A), please prepare this section carefully



# Thank you!

## #HorizonEU

<http://ec.europa.eu/horizon-europe>

[https://rea.ec.europa.eu/funding-and-grants/horizon-europe-widening-participation-and-spreading-excellence\\_en](https://rea.ec.europa.eu/funding-and-grants/horizon-europe-widening-participation-and-spreading-excellence_en)



© European Union 2021

Unless otherwise noted the reuse of this presentation is authorised under the [CC BY 4.0](https://creativecommons.org/licenses/by/4.0/) license. For any use or reproduction of elements that are not owned by the EU, permission may need to be sought directly from the respective right holders.

Image credits: © ivector #235536634, #249868181, #251163013, #266009682, #273480523, #362422833, #241215668, #244690530, #245719946, #251163053, #252508849, 2020. Source: Stock.Adobe.com. Icons © Flaticon – all rights reserved.