

#innovacion
#ayudascdti
#asesoramiento
#internacionalizacion



HORIZONTE EUROPA CLÚSTER 1: SALUD MISIÓN CÁNCER: Convocatorias 2022

Carolina Carrasco Cuevas
carolina.carrasco@cdti.es

Punto Nacional de Contacto - HE - SALUD
Punto Nacional de Contacto - Misión Cáncer
Experta en el Comité de Programa - Clúster 1

16 junio 2022

HORIZONTE

EUROPA
@HorizonteEuropa



Financiación de la I+D+I en cáncer en Horizonte Europa

HORIZONTE EUROPA 2021-2027 (M€, precios corrientes)			95.517		
Pilar 1: Ciencia de Excelencia		Pilar 2: Desafíos Mundiales y Competitividad Industrial Europea		Pilar 3: Europa Innovadora	
25.011		53.516		13.597	
Consejo Europeo de Investigación	16.004	Salud	8.246	Consejo Europeo de Innovación	10.105
Acciones Marie Skłodowska-Curie	6.602		2.280	Ecosistemas Europeos de Innovación	527
Infraestructuras de Investigación	2.406		1.596	Instituto Europeo de Innovación y Tecnología	2.965
			15.349		
			15.123		
		Alimentación	8.952		
		Ce	1.970		
Ampliar la participación y fortalecer el Espacio Europeo de Investigación			3.393		
Ampliar la Participación y Difundir la Excelencia		2.955	Reformar y Mejorar el Sistema Europeo de I+I		438



INFRA-EOSC-2021-01-06: FAIR and open data sharing in support of cancer research
INFRA-SERV-2021-01-01: Research infrastructures services to support research addressing cancer

Financiación de la I+D+I en cáncer en Horizonte Europa



SALUD
8.246 M€

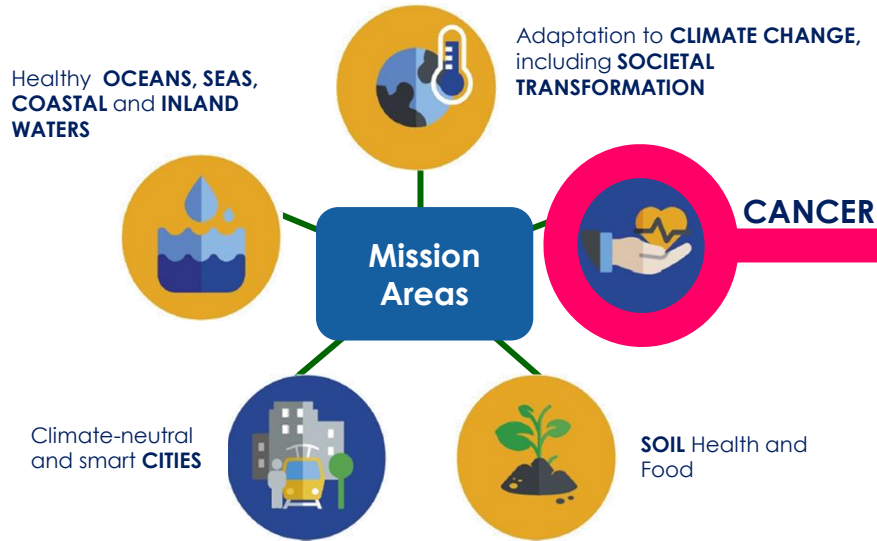
- **Tópicos abiertos, sin patología concreta**
- **Tópicos dirigidos a cáncer**
 - **HLTH-2021-DISEASE-04-01:** Improved supportive, palliative, survivorship and end-of-life care of cancer patients
 - **HLTH-2021-CARE-05-02:** Data-driven decision-support tools for better health care delivery and policy-making with a focus on cancer



PARC: EUROPEAN PARTNERSHIP FOR THE ASSESSMENT OF RISKS FROM CHEMICALS



Misión Cáncer



Report of the Mission Board for Cancer

Para 2030, más de 3 millones de vidas salvadas, viviendo más y mejor

EUROPE'S BEATING CANCER PLAN
LET'S STRIVE FOR MORE
#EUCancerPlan

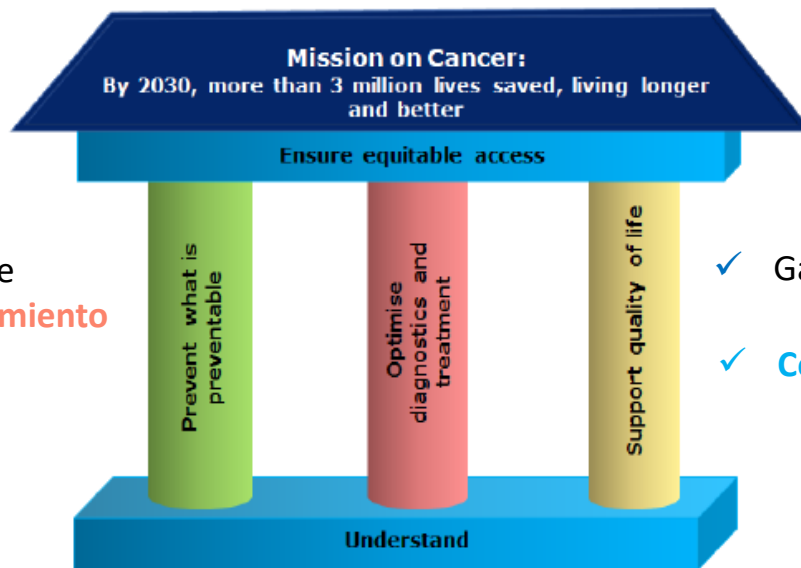
Basado en el Plan de acción contra el cáncer de la UE y sus cuatro pilares

- Prevention
- Diagnosis
- Treatment
- Quality of life of patients & survivors

WP 2021-22: 252M€

Programa de Trabajo propio para la I+D+I

Misión Cáncer: Áreas de intervención

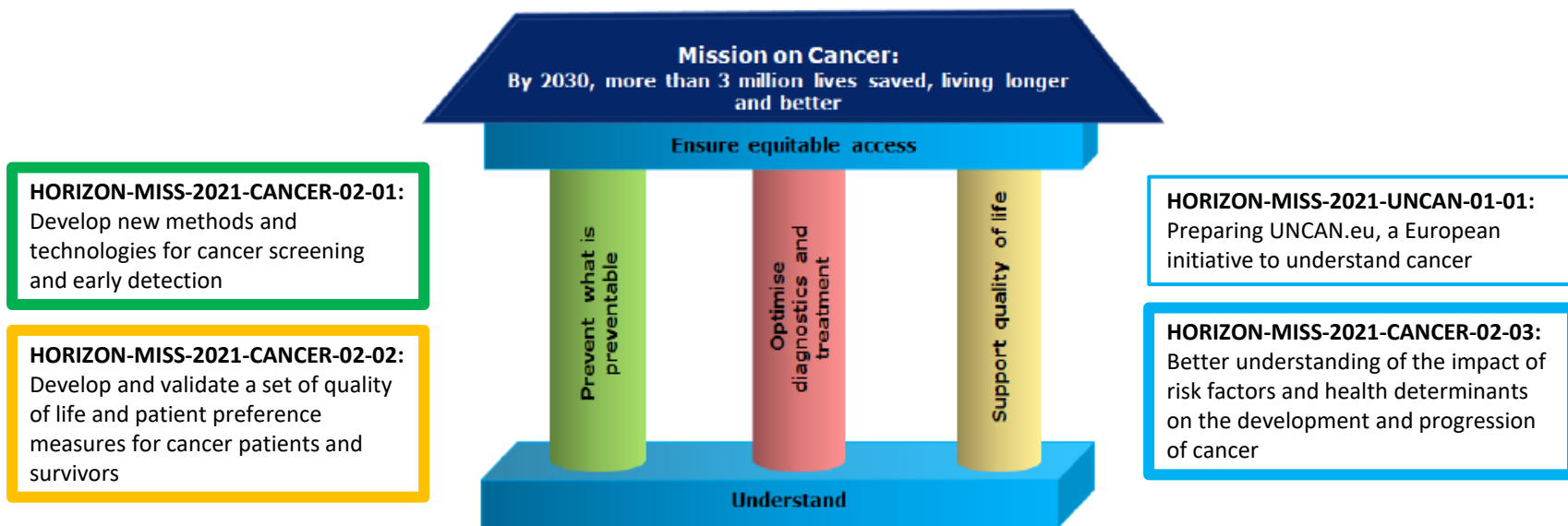


- ✓ **Prevenir** lo que sea prevenible
- ✓ Optimizar **diagnóstico y tratamiento**
- ✓ Apoyar la **calidad de vida**

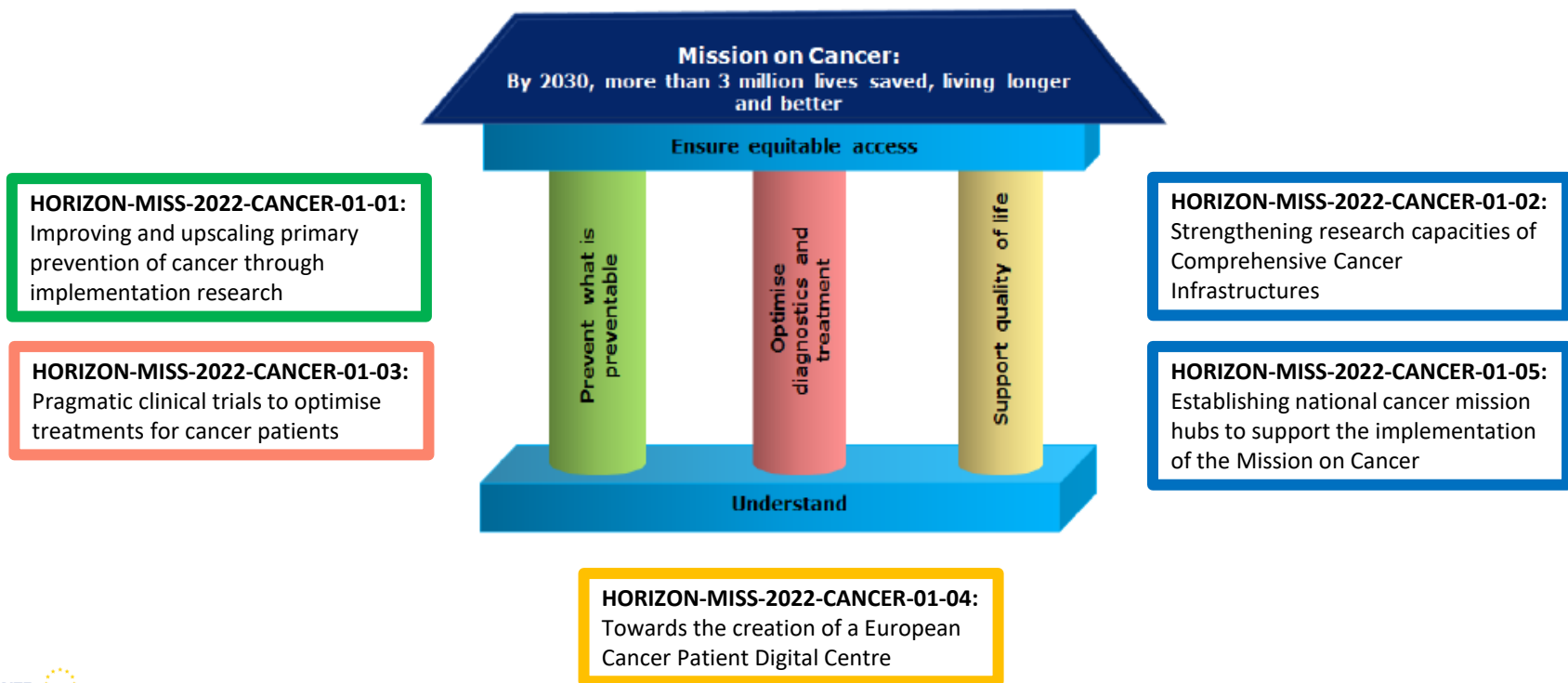
- ✓ Garantizar un **acceso equitativo**
- ✓ **Comprender** el cáncer

En Europa son diagnosticadas 2.7 millones de personas al año
Fallecimientos anuales por cáncer: 1.3 millones

Programa de Trabajo: Convocatorias 2021



Programa de Trabajo: Convocatoria 2022





HORIZON-MISS-2022-CANCER-01-01: **Improving and upscaling primary prevention of cancer through implementation research**

Closure: **07.09.2022**; Indicative call budget: EUR 50 M; Project size: EUR 3 – 8 M; **R&I actions**.

Scope:

- Implementation and upscaling of evidence-based primary cancer prevention interventions. Barriers should be identified and addressed.
- **Clinical trials and translational research are not within scope.**
- Portfolio approach applies to ensure appropriate coverage of childhood cancer.

Expected outcomes:

- Evidence-based, tailored and affordable primary prevention programmes targeting known cancer risk factors and health determinants, including behavioural factors.
- Healthcare professionals and patient organisations provide evidence-based information targeted at individuals and families on cancer prevention.
- Regional and national policymakers and authorities engage in implementing and **scaling-up** the most suitable prevention programmes.
- Further upscaling and **opportunities to innovate** primary prevention programmes at local, urban, rural, regional, national or international level.

HORIZON-MISS-2022-CANCER-01-02: **Strengthening research capacities of comprehensive cancer infrastructures**

Closure: **07.09.2022**; Indicative call budget: EUR 10 M; Project size: EUR 10 M; **Coordination & Support Action**

Scope:

- Offer an R&I-centred **capacity-building programme** to support existing and future comprehensive cancer infrastructures.
- Cooperation with the EU network of comprehensive cancer centres CRANE, being established through Europe's Beating Cancer Plan. Participating countries will be provided with recommendations. Support and roadmap for implementation and transferable best practices will be identified.

Expected outcomes:

- Research and health policy makers will benefit from support to further develop or set up comprehensive cancer infrastructures, leading to improvement in *research and access to care*.
- Research and healthcare professionals will benefit from a **better integration between research and care**;
- Researchers will benefit from innovative infrastructures to perform research and participate in studies.
- Citizens, including patients and their caregivers will have access to screening, diagnostics and treatments, care pathways and integrated care. **Participation in clinical trials will be facilitated.**

HORIZON-MISS-2022-CANCER-01-03: **Pragmatic clinical trials** to optimise treatments for cancer patients

Closure: **07.09.2022**; Indicative call budget: EUR 60 M; Project size: EUR 4 – 6 M; **R&I actions**

Scope:

- Support **academic investigator-driven** clinical trials which have the potential to start changing clinical practice as of 2025. **Focus on refractory cancers in children/adolescents/young adults and adults.**
- Pragmatic clinical trials focus on **choosing between care options**. Pragmatic trials evaluate effectiveness, the effect of treatment in routine (real-world) clinical practice.
- Portfolio approach applies to ensure appropriate coverage of childhood cancer.

Expected outcomes:

- Cancer patients and their caregivers will have access to optimised and affordable treatment interventions for **refractory cancers** that increase their quality of life.
- National healthcare providers, policymakers and authorities will have the evidence to implement optimised and affordable treatments in their healthcare systems, including in everyday medical practice.

HORIZON-MISS-2022-CANCER-01-04: Towards the creation of a European Cancer Patient Digital Centre (ECPDC)

Closure: 07.09.2022; Indicative call budget: EUR 3 M; Project size: EUR 3 M; **Coordination & Support Action**

Scope: Facilitate the integration of existing patient-controlled health data networks, which would pave the way for the creation of a ECPDC. Solutions for cross-border transfer of data & integration within the European Health Data Space should be analysed/provided, a governance structure developed, a first testing phase of a future ECPDC designed and performed.

Expected outcomes:

- Citizens, including cancer patients and survivors, are able to donate, access and manage their own clinical data, including patient-reported outcomes (PRO), and have control over data access in a secure, standardised, ethical and interoperable manner. They will receive information on personalized care through the ECPDC;
- The ECPDC will be used as a **federated, virtual** 'global' centre of knowledge on cancer (such as treatment side-effects, psychological and legal support);
- Researchers, citizens, including cancer patients and survivors, and policy-makers have access to a valuable resource of aggregated patient data that are evolving over time, and are empowered to co-decide on their care as well as on **participation in research**.



HORIZON-MISS-2022-CANCER-01-05: Establishing national cancer mission hubs to support the implementation of the Mission on Cancer

Closure: **07.09.2022**; Indicative call budget: EUR 3 M; Project size: EUR 3 M; **Coordination & Support Action**.
Duration 3 years (followed by 2nd phase of support)

Scope:

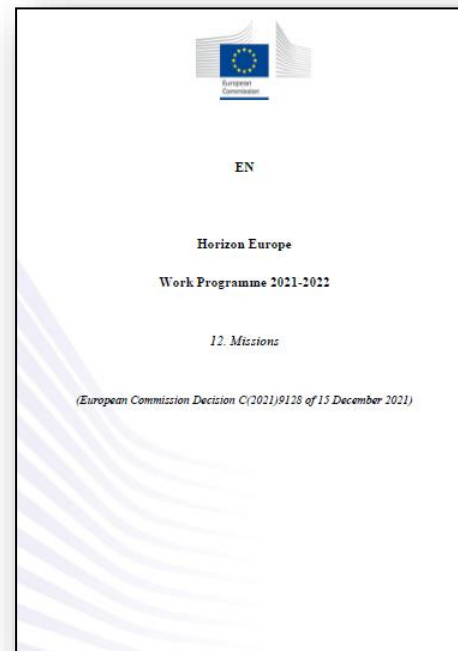
- Facilitate integration of activities ('synergies') Cancer Mission and Europe's Beating Cancer Plan at national level. How? National cancer mission hubs in MS and AC – building on existing structures/'mirror groups' or creating new ones.
- Facilitate engagement of stakeholders and other actors in national research and innovation communities and health systems, organise citizen engagement activities at national, regional and/or local level. Close cooperation with pan-mission consortium TRAMI.

Expected outcomes:

- The activities of the Cancer Mission are integrated with activities at national, regional, and local levels;
- Actors at national, regional or local health and research and innovation systems engage in the policy dialogue on cancer;
- Citizens, including patients, and national, regional and local stakeholders engage in the policy dialogue on cancer.

MISIÓN CÁNCER - Programa de Trabajo 2021-2022

- ✓ **2021: CERRADO**
- ✓ **2022: ABIERTO – Cierre 7 septiembre 2022**
 - **Presupuesto: 126 M€ - 5 tópicos**
 - **Tipología de proyectos: RIAs / CSAs**
 - **Solicitudes y búsqueda de socios:**
Portal “Funding & Tender Opportunities”
 - **Reglas Horizonte Europa**
 - Consortios (RIA):** 3 entidades independientes de 3 Estados UE o Países Asociados (al menos 1 UE)
 - Abierto a **terceros países**
 - **Evaluación en una fase:**
 - Mayor implicación de la sociedad
 - Mayor atención a la generación de resultados



Información complementaria



https://ec.europa.eu/info/research-and-innovation/events/upcoming-events/horizon-europe-info-days/eu-missions_en

Day 1 (17 May 2022)

[Watch the recording](#)

- 09:05 - 09:10
Welcome to the EU Missions Info Days
- 09:10 - 10:10
100 Climate-Neutral and Smart Cities by 2030 Mission
[Presentation](#)
- 10:30 - 12:30
Cancer Mission
[Presentation](#)
- 14:00 - 17:00
Restore our Ocean and Waters by 2030 Mission
[Presentation](#)

Información complementaria

<http://www.ec.europa.eu/info/funding-tenders>

European Commission | Funding & tender opportunities
Single Electronic Data Interchange Area (SEDIA)

SEARCH FUNDING & TENDERS | HOW TO PARTICIPATE | PROJECTS & RESULTS | **WORK AS AN EXPERT** | SUPPORT

Horizon Europe (HORIZON)

- Key steps
- Reference documents
- Participant register
- Partner search

EQUIPO CDTI - SALUD

Marta Gómez Quintanilla (marta.gomez@cdti.es)

Marta de Diego (marta.dediego@cdti.es)

Carolina Carrasco (carolina.carrasco@cdti.es)

PUNTOS NACIONALES DE CONTACTO (NCPs) Clúster 1

Carolina Carrasco – CDTI (carolina.carrasco@cdti.es)

Marta de Diego – CDTI (marta.dediego@cdti.es)

Juan Riese – ISCIII (jriese@eu-isciii.es)

Marta Barrionuevo – ISCIII (mbarrionuevo@eu-isciii.es)



+ info sobre programas y ayudas
para la
internacionalización de la I+D+I española



@HorizonteEuropa - @CDTIoficial