

EXPERIENCIAS EN PROGRAMAS MSCA COFUND

International Programmes for Talent Attraction to the Campus of
International Excellence of the Ebro Valley

IBERUSTALENT – IBERUSEXPERIENCE – IBERUSINTERDOC

Seminario online nacional MSCA COFUND 2024

12 julio 2024

Nuria Mateo Ansón



CAMPUS DE EXCELENCIA
INTERNACIONAL
DEL VALLE DEL EBRO



campus iberus



CAMPUS OF INTERNATIONAL EXCELLENCE
OF THE EBRO VALLEY





**campus
iberus**

CAMPUS DE EXCELENCIA
INTERNACIONAL
DEL VALLE DEL EBRO



**Universidad
Zaragoza**

upna

Universidad Pública de Navarra
Nafarroako Unibertsitate Publikoa



Universitat de Lleida

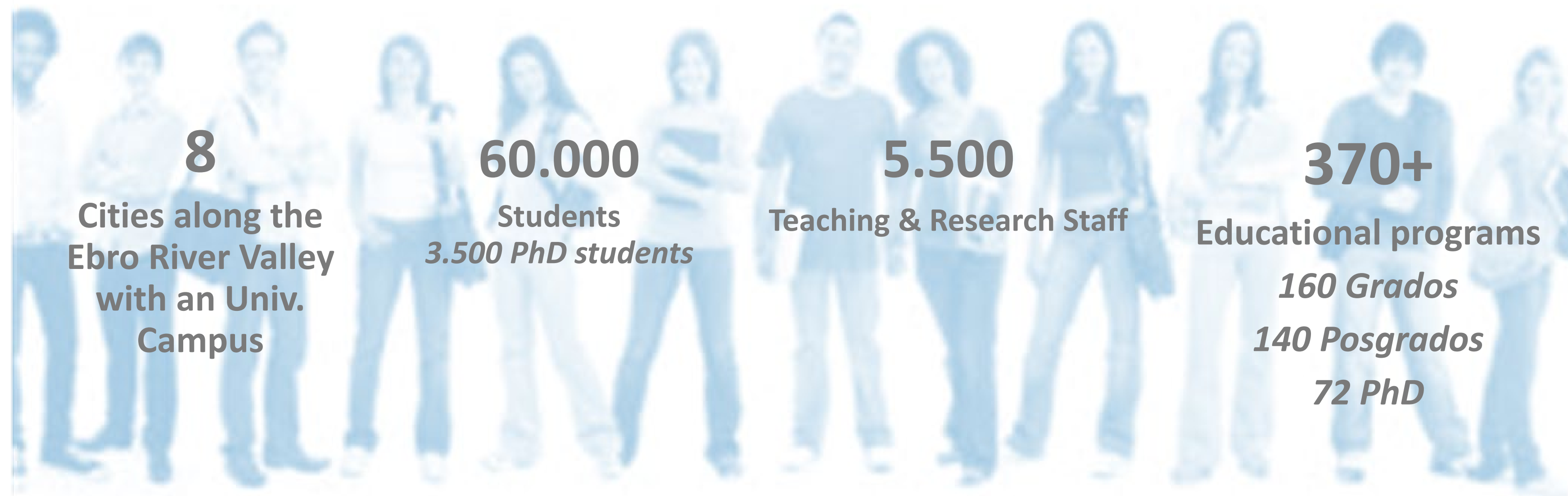


**UNIVERSIDAD
DE LA RIOJA**

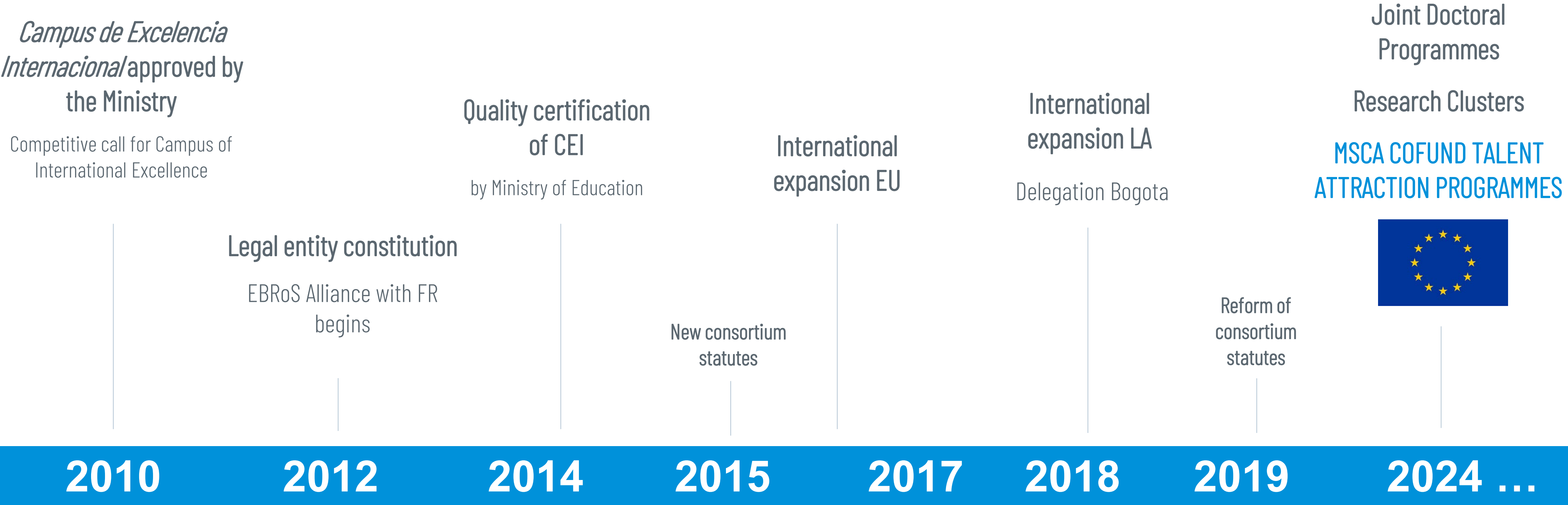
CAMPUS IBERUS: Strategic Alliance of 4 Public Universities



- National Programme of “Campus of International Excellence”.
- Aggregation of R&I resources of 4 Regions: Aragon, Navarre, Rioja, and Lleida in Catalonia.



CAMPUS IBERUS IN A DECADE



Universidad
Zaragoza

upna
Universidad Pública de Navarra
Nafarroako Unibertsitate Publikoa



UNIVERSIDAD
DE LA RIOJA



campus
iberus

CAMPUS IBERUS RESEARCH CLUSTERS

5 Research Areas of strategic specialisation

50 Research Clusters

+750 researchers of 4 Universities in 4 regions

+145 researchers of other research organisations and economic stakeholders (+90 enterprises)



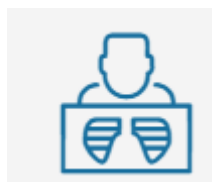
AGRIFOOD - NUTRITION

Alimentación y Nutrición



GRUPOS DE ACCIÓN

- | | |
|-----------------------|---------------------|
| Alimentos Funcionales | Oliberus |
| FoodImpact | β-glucanos |
| Prediacui | Gestión del suelo |
| Pastiberus | Producción de carne |
| Qualivitis | Platos 5ª gama |
| Tasos | Peanut |
| Optifit | Malherbología |



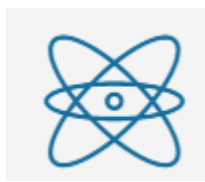
HEALTH - TECHNOLOGY

Tecnologías para la Salud



GRUPOS DE ACCIÓN

- | | |
|--------------------------|-------------|
| Infecmol | EEHT |
| Health Multimodal | Exer-Health |
| Big-Data | Biosensores |
| Innovación en salud | SHINSCI |
| Sistemas Neurocognitivos | HealthyOrg |
| BioF-DTE | T-Cuido |



ENERGY - SUSTAINABILITY

Energía, Medioambiente y Sostenibilidad



GRUPOS DE ACCIÓN

- | | |
|--------------|---------------------|
| Smart Cities | Sensores |
| Almater | Energías Renovables |
| Nanobact | Forcam |



SOCIAL - TERRITORIAL DEV.

Desarrollo Social y Territorial



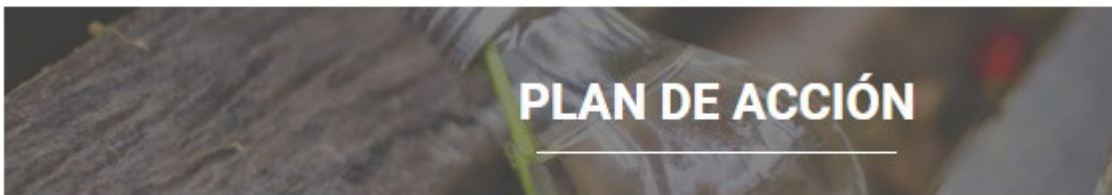
GRUPOS DE ACCIÓN

- | | |
|----------------|---------------------|
| MOTECO | Inclusión Educativa |
| RITransCo | PROGENEDU |
| MIGRAPLUR-Ebro | TESEO-DE-GLOBAL |
| ICON | PYE |
| A/P+S/T | EMPRENDIMIENTO |
| FROHER | D_SCI |
| GEPA | LISOSTUR_ECOCIR |
| GEOT-DS | SUN |



CIRCULAR BIOECONOMY

Economía Circular y Bioeconomía



GRUPOS DE ACCIÓN

VAQ2BI

Platos 5ª gama



**campus
iberus**

MSCA COFUND INTERNATIONAL ATTRACTION PROGRAMMES H2020



Doctoral programme
Call H2020-MSCA-COFUND-2017

1 September 2018 – 31 August 2023/24



**iberus
experience**

Postdoctoral programme
Call H2020-MSCA-COFUND-2020

1 July 2021 – 30 June 2026

➤ **3 years working contract full-time**

➤ **Up to 9.600€ / year for research, training & networking**

➤ **Complementary training programme transversal skills**

➤ **Participation in outreach and social events**

➤ **Non academic mentor or supervisor**

This project has received funding from the European Union's H2020 research and innovation programme under Marie Skłodowska-Curie grant agreement No 801586



This project has received funding from the European Union's Horizon 2020 research and innovation programme under the Marie Skłodowska-Curie grant agreement No 101034288



MSCA COFUND PROGRAMMES H2020 - DIFFERENCES



Doctoral programme
Call H2020-MSCA-COFUND-2017



AGRIFOOD - NUTRITION



HEALTH - TECHNOLOGY

- 36 PhDs
- 2 Calls
- 2 Research areas
- Research lines pretty much defined
→ Freedom of multiple choice.
- Selection committees by Campus Iberus (internal experts from the 4 universities + external experts).
- Dissemination by own means.



**iberus
experience**

Postdoctoral programme
Call H2020-MSCA-COFUND-2020

- 11 Postdoctoral fellows
- 1 Call
- 5 Research areas (+ interdisciplinary)
- Research groups broad lines [*31 research groups for 11 fellows*]
→ Proposal self-driven by the applicant.
- Personal Career Development plan.
- External evaluation agency + committee at university level.
- Communication agency.



AGRIFOOD - NUTRITION



HEALTH - TECHNOLOGY



ENERGY - SUSTAINABILITY

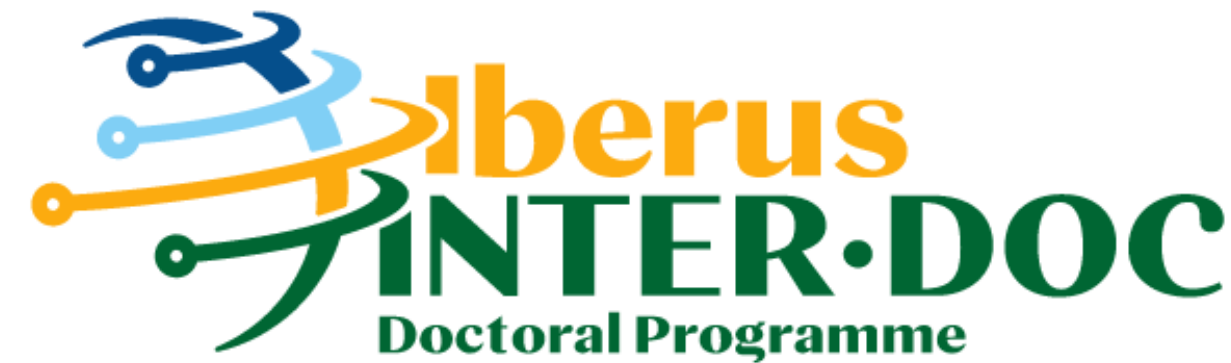


CIRCULAR BIOECONOMY



SOCIAL - TERRITORIAL DEV.

NEW MSCA COFUND PROGRAMME OF HORIZON EUROPE



Doctoral programme
Call HORIZON-MSCA-2023-COFUND



- 23 Doctoral candidates
- 2 Calls
- 5 Research areas (+ interdisciplinary)
- Research groups with interdisciplinary research lines [48 research groups for 23 DCs]
-> Multiple choice (up to 3 applications)
- **4 YEARS CONTRACTS**
- Data Management Plan
- CAREER DEVELOPMENT PLAN (extensive training programme – ResearchComp tool, ref to new charter and code, incl. mental health action plan, ethics and research integrity, open science, gender, etc)
- INTERSECTORIAL EXPOSURE +++
- DISSEMINATION & EXPLOITATION STRATEGIES (incl. Research transfer to industry and policy makers or public admin)



HR EXCELLENCE IN RESEARCH



**Universidad
Zaragoza**

upna

Universidad Pública de Navarra
Nafarroako Unibertsitate Publikoa



Universitat de Lleida



**UNIVERSIDAD
DE LA RIOJA**

EVALUATION SUMMARY RESULTS

H2020-MSCA-COFUND-2017 DOCTORAL PROGRAMME



93.8%

- 50% Excellence: 4.7/5
- 30% Impact: 4.6/5
- 20% Implementation: 4.8/5

Cut-off score 93.4

124 eligible proposals (21 funded)

H2020-MSCA-COFUND-2020 FELLOWSHIP PROGRAMME



95.4%

- Excellence: 4.7/5
- Impact: 4.8/5
- Implementation: 4.9/5

Cut-off score 88.6

148 eligible proposals (44 funded)

HORIZON-MSCA-2023-COFUND DOCTORAL PROGRAMME



93.2%

- Excellence: 4.5/5
- Impact: 4.9/5
- Implementation: 4.7/5

Cut-off score 88

102 eligible proposals (27 funded)



ampus
erus

SELECTION COMMITTEES



This project has received funding from the European Union's H2020 research and innovation programme under Marie Skłodowska-Curie grant agreement No 801586

Eligibility- Executive Project Office

Evaluation



1. Quality evaluation 50%

Technical Committee



External Scientific Committee



2. Interview 50%

Technical Committee



RESEARCHERS



Ana María Rua
Ibarz



Cristina Vieites
Blanco



Izzah Shahid



Joan Oñate
Narciso



Lauren Yabuki



Lucas Gabriel
Castellani



María Batuecas



Mattia
Ghirardello



Rine Reuben



Saqib Gulzar



Trung Anh Trieu

Eligibility- Management Project Office (+ university coordinators)

Evaluation

- 1. External scientific evaluation - Agency 60%
- 2. Interview - Technical evaluation 40%



Total score – ranking list per university:

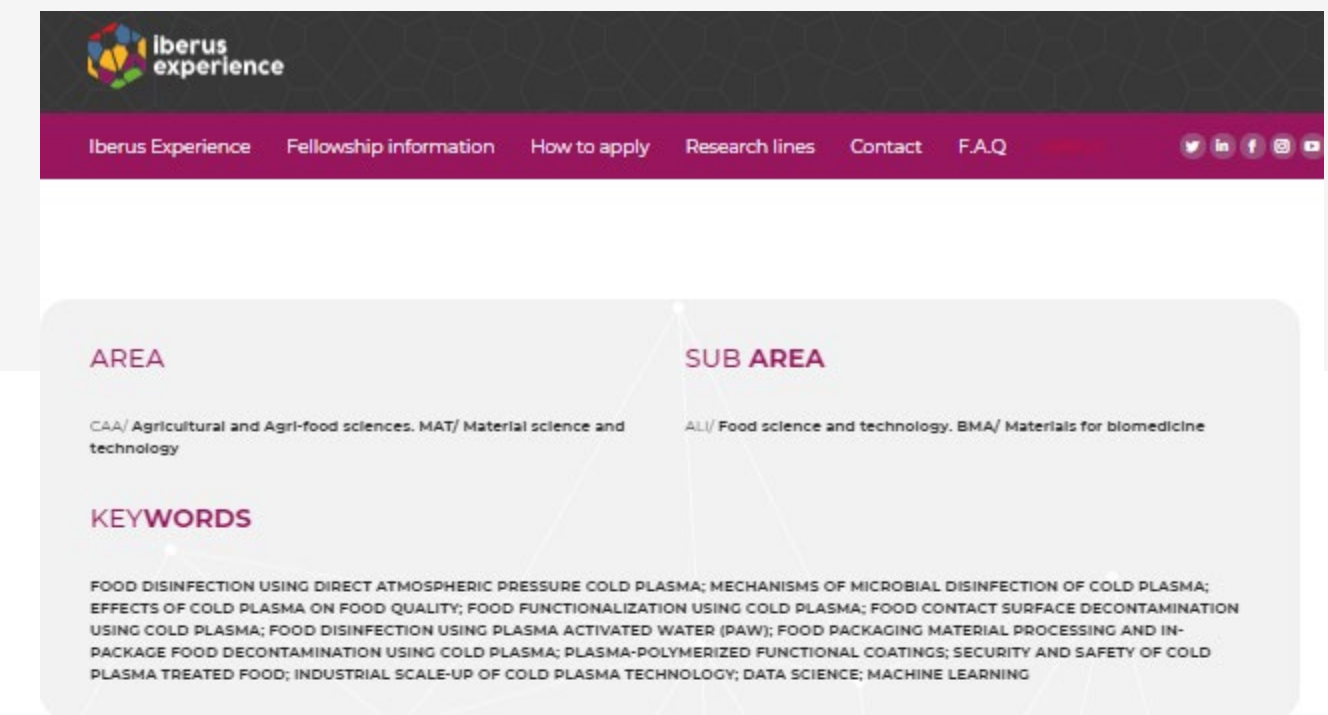
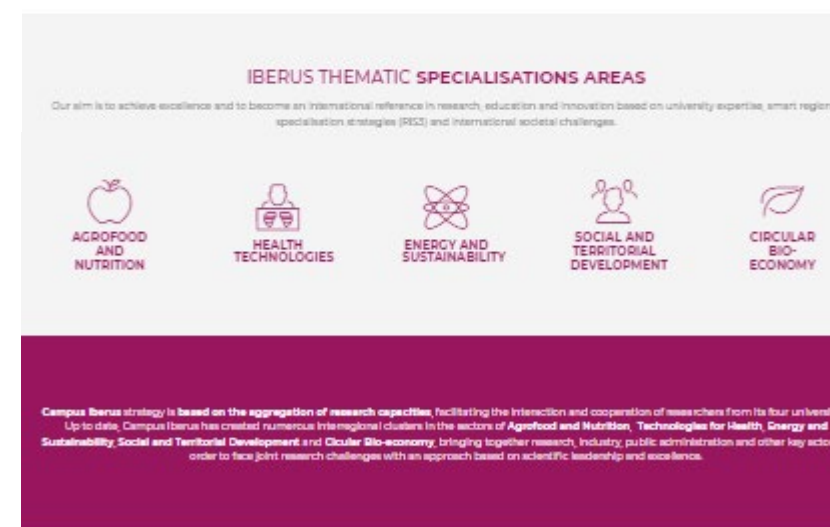
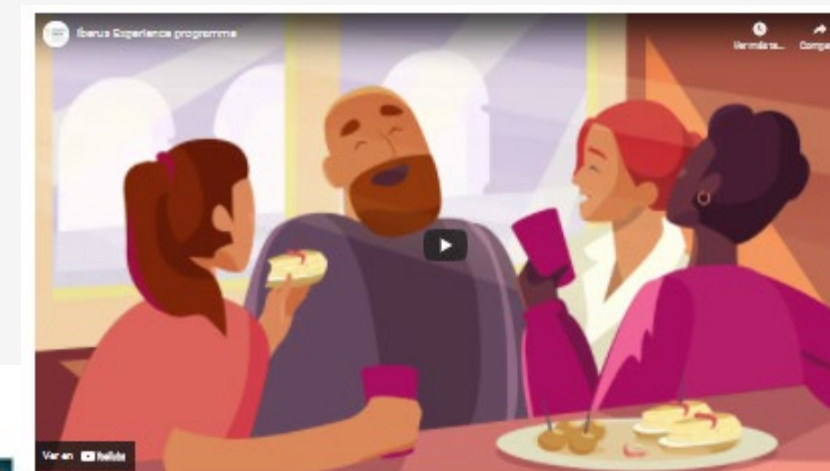
- 1. Postdoc x_1
- 2. Postdoc x_2 → selected
- 3. Postdoc x_3
- 4. Postdoc x_4
- 5. Postdoc x_5 → waiting list
- 6. Postdoc x_6
- 7. Postdoc x_7

Technical Committee at University level

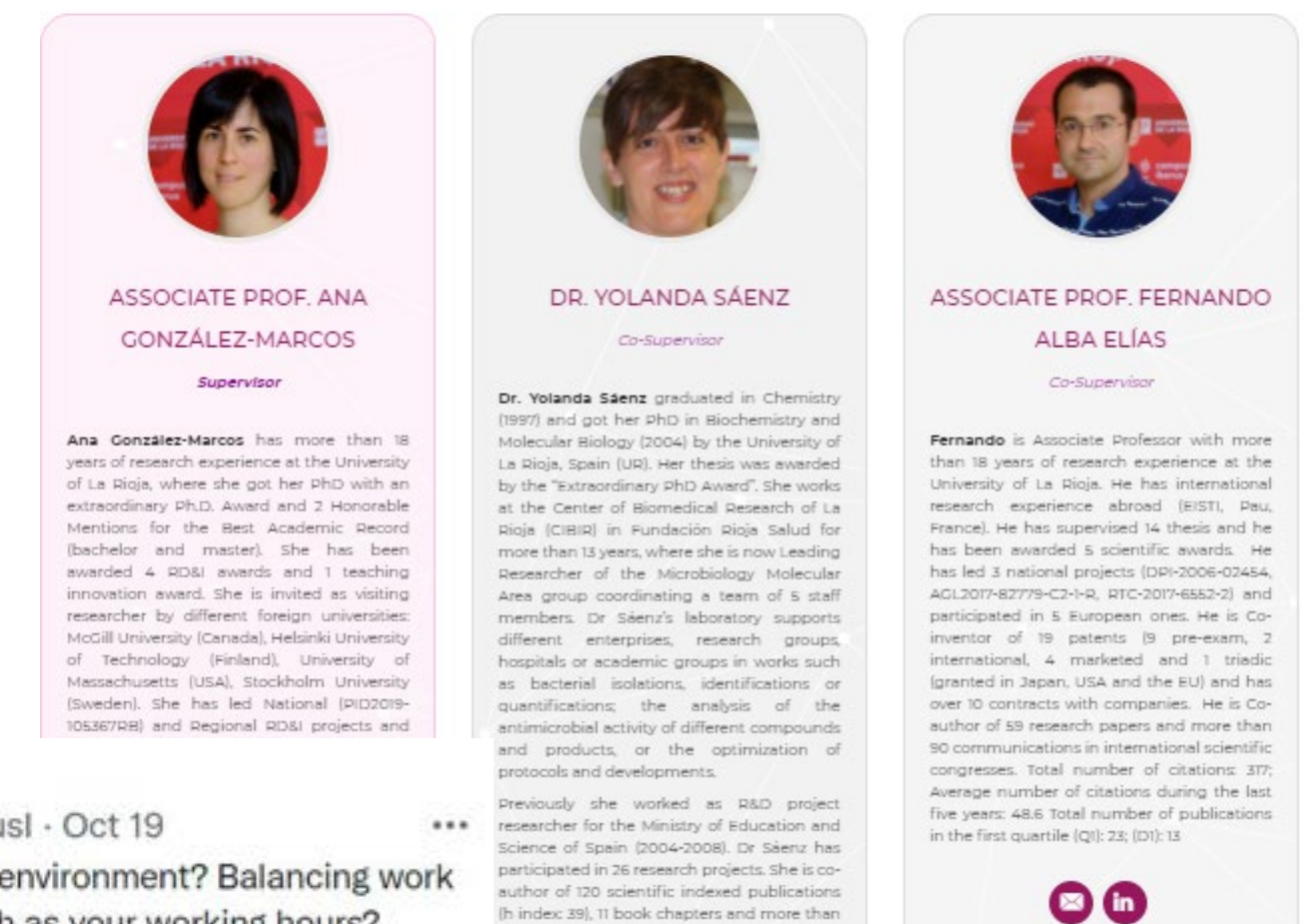


DISSEMINATION OF THE CALL

- WEBSITE
- VIDEOS
- OPEN DAY (on line)
- SOCIAL MEDIA (Twitter, LinkedIn)
- EMPLOYMENT PORTALS: Euraxess, FindaPostdoc, RedIRIS, Nature careers.
- DISTRIBUTION (e-mail or messages) to target:
 - 25 international postdoctoral associations or profesional portals.
 - 12 women researchers associations or networks
 - 5 of the kind for refugees
 - 27 networks or associations of Spanish researchers abroad.



SUPERVISORY TEAM

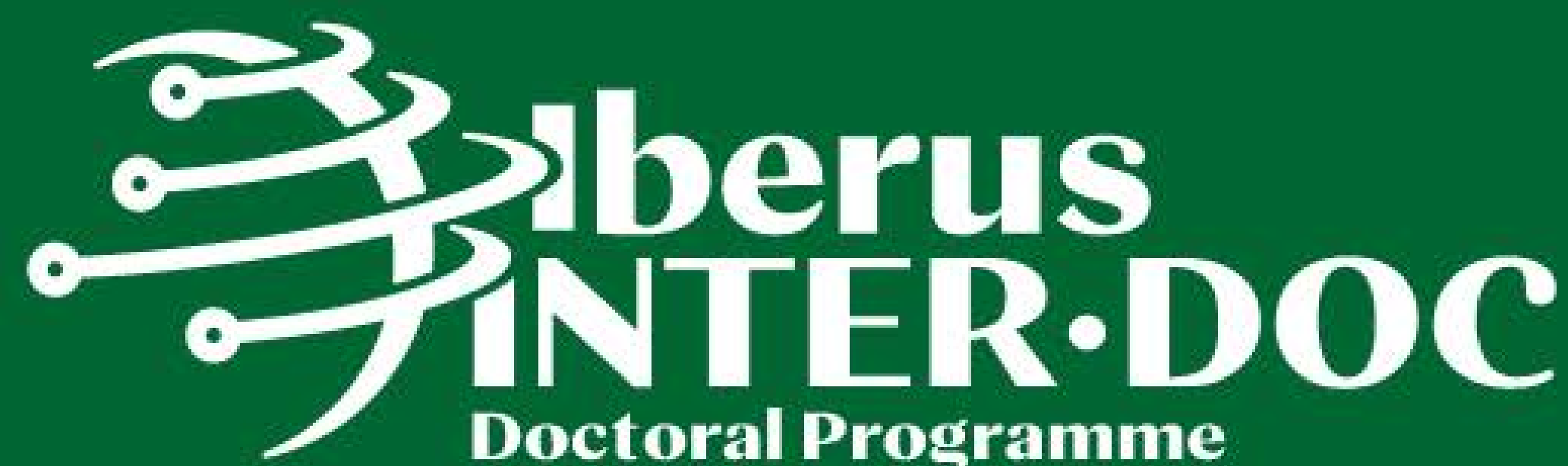




Funded by
the European Union



Coming soon...

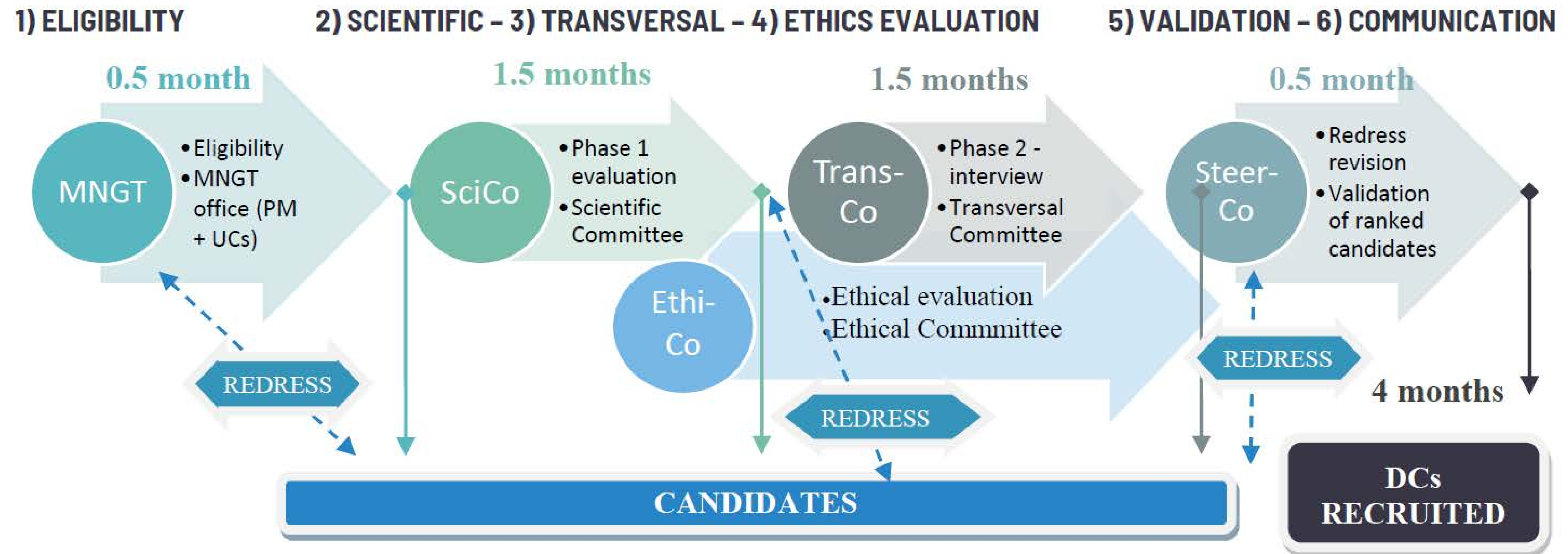


SELECTION PROCESS



Funded by
the European Union

Researchers' selection workflow and powers entrusted to the different actors



Eligibility- Management Team (Campus Iberus + Coordinator at each University)

Evaluation

1. Scientific Committee (SciCo) 60%



Independent
expert



External expert



External International expert

2. Transversal Committee (TransCo) - interview 40%

Committee at University level + independent expert



International
external expert



Vicerector of
research



HRS4R
responsible

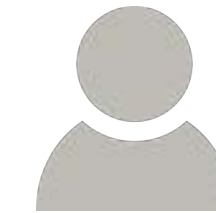


Supervisor
*voice but
no vote !*



Campus Iberus
PM or coordinator

+



Independent
expert

Total score – ranking list per university

ETHICS COMMITTEE

3. Ethical Committee (EthiCo)

Composed by 5 members: the PC and the 4 representatives of each of the Research Ethical Committees at the recruiting universities, namely the Vice-Rectors of Research.

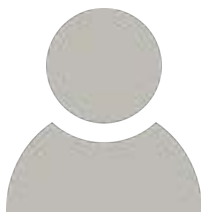
 Associated with document Ref. Ares(2024)4328156 - 14/06/2024

Ethics Summary Report



Call Reference	HORIZON-MSCA-2023-COFUND-01
Proposal Number	101178498
Acronym	IberusINTERDOC

+ independent ethics expert



External Independent Ethics Advisor/Board

In your opinion, would it be exceptionally necessary to appoint an external independent ethics advisor or an ethics board (with a minimum of three experts) reporting periodically to the Commission/Agency/funding body?	Yes (Ethics Advisor)
An ethics mentor must be appointed to identify and follow-up the ethics aspects in the project but given the size of the grant an independent ethics expert is recommended.	

POST-RECRUITMENT: Welcoming, cultural and social integration



International Facebook Group

Meet&Greet events

Connecting international newcomers with local Phd mentors

Add a new discussion topic

Discussion	Started by
☆ Telegram chat UDL	 Carmen Ramón 12 Jan 2021
☆ Bank account help!!	 Diego Nicolas B... 16 Dec 2020
☆ Taller informativo Escuela de Doctorado	 Carmen Ramón 27 Nov 2020



IBERUS CONNECT – NETWORK AND INTEGRATION

- Online international community of the 4 universities.
- **Mentorship programme** providing a local mentor (former PhD trained by the Doctoral School) guiding the newcomer in the admin PhD procedures and others.
- **Ambassadors** organize local gatherings for social integration.
- IberusConnect members (> 300) act as *integrators* of the newcomers to the city and PhD community and social life.

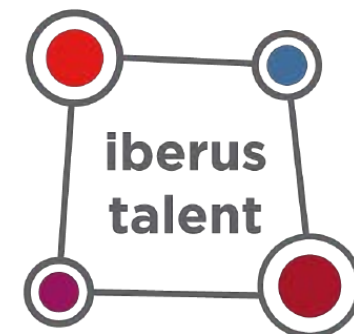


TRAINING PROGRAMME – online / onsite

1. RESEARCH SKILLS

2. TRANSVERSAL SKILLS

- Spanish.
- Value of Doctoral Research and Market Orientation, Research to Market.
- Research process management.
- English academic / writing / journals of high index.
- Data management, statistics.
- Bibliographic resources.
- Google scholar profile.
- Working in academia.
- Teaching skills
- BSc & MSc thesis direction skills
- Professional careers in the EU
- Career development skills.
- Publishing integrity.
- Leadership, teamwork
- Communication skills
- Erasmus, EU projects.

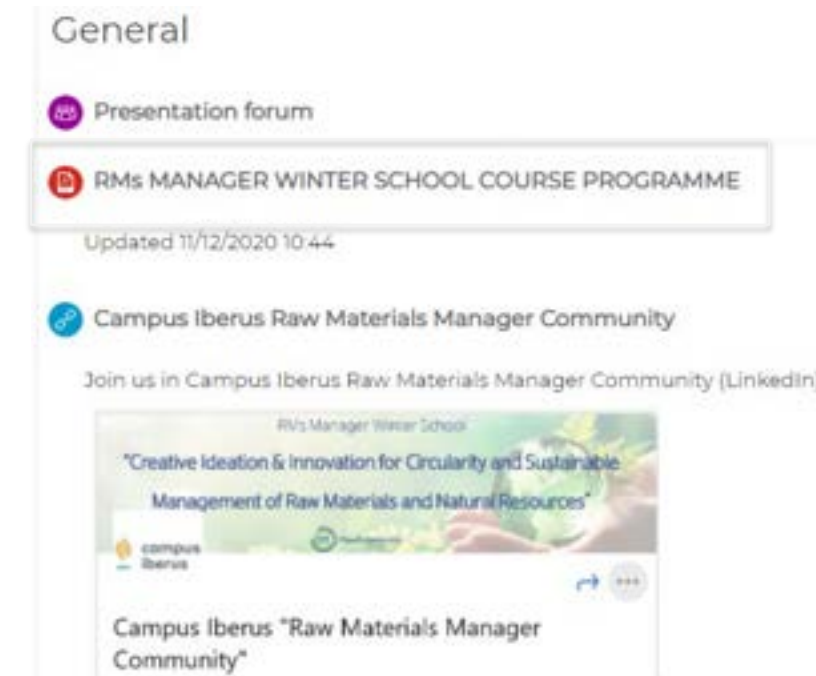


Campus Iberus TRAINING PROGRAMME

April | 20



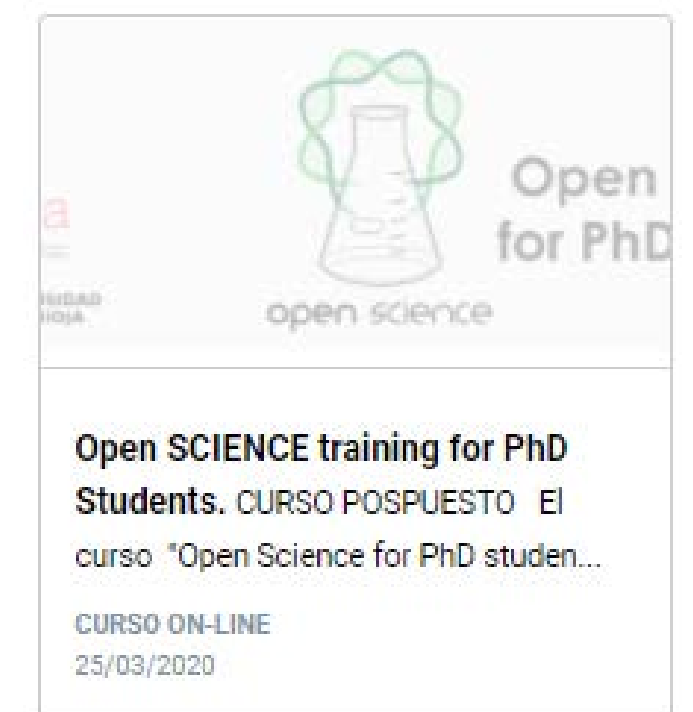
December | 20



February | 21



March | 21



September | 21



October | 21



October | 21



November | 21



Entrepreneurship,
Project Management

PHD & POSTDOCTORAL DAYS



Figura 1.2. Doctorandos participando en el taller “Cuidado de la salud mental durante el doctorado.”



Figura 1.5. Los premiados, Mohsen Ramezani y Yaneth Cardona con sus pósteres.

TRAINING PROGRAMME – continuous improvement

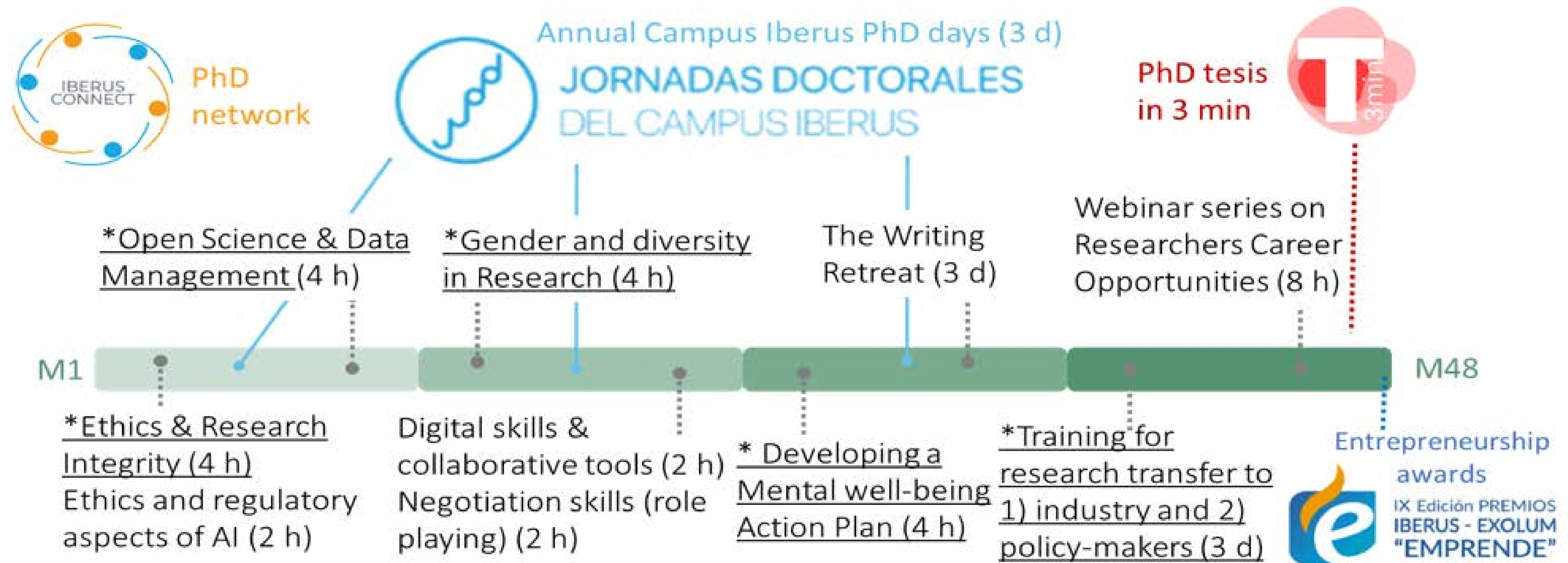


Figure 3. IberusINTERDOC training programme proposed

HINTS & TIPS

- **PLAN AHEAD:** Meetings with universities (co-funders), involvement at different levels (OPEs, VR, R).
[6 months ahead]
- **PREWORK:** Research groups selection in advance.
[*Expression of interest with templates for standardised info collection*]
- **THINK & RETHINK:** Selection and evaluation system thoroughly designed (merit based, impartial, transparent, open...CLARITY) – benchmark with other projects and MSCA-IF or DN as reference.
[commitment of evaluators with your timeline – *remmuneration*]
- **BREVITY IS THE SOUL OF WIT:** Realistic planning but avoiding long evaluation times.
[complains from both the candidates and the supervisors]
- **THE UNTHINKABLE CAN HAPPEN:** Waiting lists with several candidates is a *MUST!*
- **TEAM & ALLIES:** you are not alone! Management staff + others (*even subcontracts*).

MAKE USE OF ALL POSSIBLE RESOURCES

- Networks, shared practices, project's examples, events like this and others!
- Webinars (EC, Horizonte Europa), infodays...
- Guide for applicants, workprogramme, faqs, COFUND Handbook
- Consultants
- HE NCP Portal - MSCA-NET tools

<https://horizoneuropencpportal.eu/ncp-networks/msca/tools>

- NCPs

Acciones Marie Skłodowska-Curie (MSCA)



Jesús Rojo

Fundación para el Conocimiento
Madri+d
msca@fecyt.es
+34 91 781 65 72



Xavier Ronald Eekhout

FECYT, MCIN
msca@fecyt.es
+34 91 425 09 09



Leticia Ríaza

FECYT, MCIN
msca@fecyt.es
+34 91 425 09 09



MSCA-NET

MSCA-NET
COFUND HANDBOOK
CALL 2023
Deliverable 3.4.

NETWORK OF THE MARIE SKŁODOWSKA-CURIE ACTIONS NATIONAL CONTACT POINTS

Task 3.4.
Issued by:
Issued date:
Work Package Leader:

Handbooks
Agency for Mobility and EU Programmes, Croatia
18 December 2023
InnovationAuth (IL)

¡ GRACIAS POR VUESTRA ATENCIÓN !



Nuria Mateo Ansón

PROMOTORA DE PROYECTOS EUROPEOS



Marta De Miguel Esponera

DIRECTORA EJECUTIVA



Belén Villacampa Naverac

COORDINADORA ÁREA DE DOCTORADO

INVESTIGACIÓN



Joaquín Capablo Sesé

PROMOTOR DE PROYECTOS EUROPEOS



Eva Gallego Pérez

PROMOTORA DE PROYECTOS EUROPEOS



Rocío Juste Ballesteros

PROMOTORA DE PROYECTOS EUROPEOS



Mª Gloria Andrés Suñer

JEFA DE SECCIÓN ECONÓMICA Y ADMINISTRATIVA



Mª José Usieto Benedí

TÉCNICO DE GESTIÓN ECONÓMICA Y ADMINISTRATIVA

FORMACIÓN



Bárbara Reynoso Ruarte

GESTORA DEL ÁREA DE ESTUDIANTES



Andrés Martín Crespo

PROMOTOR DE PROYECTOS INTERNACIONALES



Carmen Ramón Puertas

TÉCNICO SUPERIOR DE INTERNACIONALIZACIÓN



Ana Esther Quílez Loncán

TÉCNICO DE INTERNACIONALIZACIÓN



Virginia Sánchez López

RESPONSABLE FUNDACIÓN CAMPUS IBERUS