

#innovacion
#ayudascdti
#asesoramiento
#internacionalizacion



Innovative Health Initiative (IHI)

Marta de Diego
marta.dediego@cdti.es



HORIZONTE
EUROPA
@HorizonteEuropa

Horizonte Europa – Clúster 1 – Salud
Infoday Nacional, 26 enero 2023

Enlaces web en las imágenes. Consulten las fuentes oficiales

¿Qué es la Iniciativa de Salud Innovadora?



La Iniciativa de Salud Innovadora (IHI) es una asociación público-privada entre la Unión Europea y las industrias europeas de ciencias de la vida

Forma parte de HORIZONTE EUROPA, y contribuye a sus objetivos

La evolución (con cambios) de la Iniciativa de Medicamentos Innovadores (IMI)

La investigación financiada por IHI debe mantenerse al nivel precompetitivo

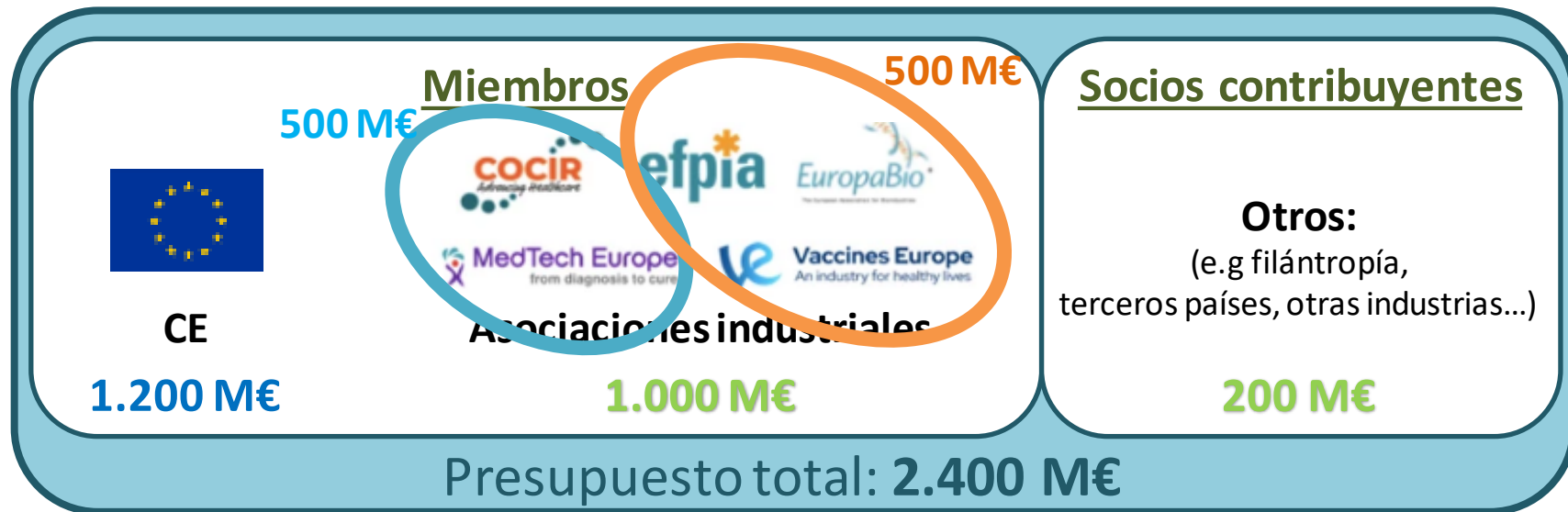
IHI: Objetivos generales



1. Contribuir a la creación de un **ecosistema de investigación e innovación** en materia de salud a escala de la Unión, que facilite la traducción de los conocimientos científicos en innovaciones
2. Fomentar el desarrollo **de innovaciones seguras, eficaces, centradas en las personas y eficientes**, que respondan a necesidades estratégicas de salud pública no satisfechas
3. Impulsar la **innovación sanitaria intersectorial** para una industria sanitaria europea competitiva a nivel mundial

Abarca la prevención, el diagnóstico, la gestión y el tratamiento de las enfermedades

IHI: Miembros y Presupuesto



¿Quién puede participar?

Any legal entity, regardless its place of establishment, carrying out work relevant to the Call objectives may be part of an applicant consortia

But... not all participating entities are eligible for funding

Reglas de HE pero un requisito adicional de elegibilidad

Min 45% Industry contribution

“Private members, their constituents or affiliated entities and contributing partners must contribute at least 45% of the action’s eligible costs and costs for its additional activities”

(IKOP + FC + IKAA) ≥ 45% of action’s (eligible costs + IKAA)

If threshold not reached collectively → (full) proposal NOT evaluated

[Nueva herramienta para verificar el cumplimiento del 45%](#)

¿Quién son los “private members”?

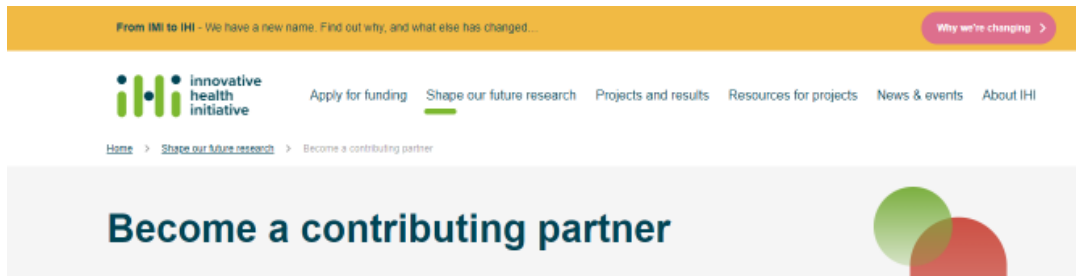
- The **private members** of IHI JU are the private industry associations COCIR, EFPIA (including Vaccines Europe), EuropaBio and MedTech Europe.



- At the level of the consortia implementing IHI JU projects, the private members include both the above-mentioned industry associations, as well as their:
 - ✓ **constituent entities**: member of one industry trade association
 - ✓ **affiliated entities**: entity that has a capital or legal link with a beneficiary (which is in this case a private member or a private member constituent entity)

¿Quién son los “Contributing Partners”?

- Any organization that wants to contribute to the IHI objectives without becoming a full member can apply
- Application: vía “letter of endorsement” to IHI Governing Board (GB)
- In letter: commit a certain contribution to a certain topic
- To be approved by the IHI GB



<https://www.ihl.europa.eu/shape-our-future-research/become-contributing-partner>

Tipos de contribuciones

Private
members

Contributing
Partners

- **IKOP** - In-kind contributions to Operational Activities

Eligible costs incurred in implementing an IHI project

Can be Non-EU IKOP or EU IKOP



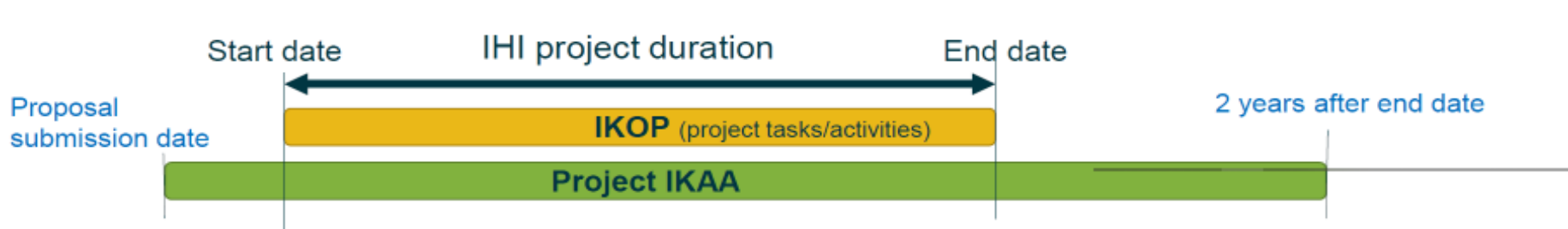
- **FC** - Financial Contributions

Cash contributions to project beneficiary(ies) from the same consortium to support eligible costs for project implementation

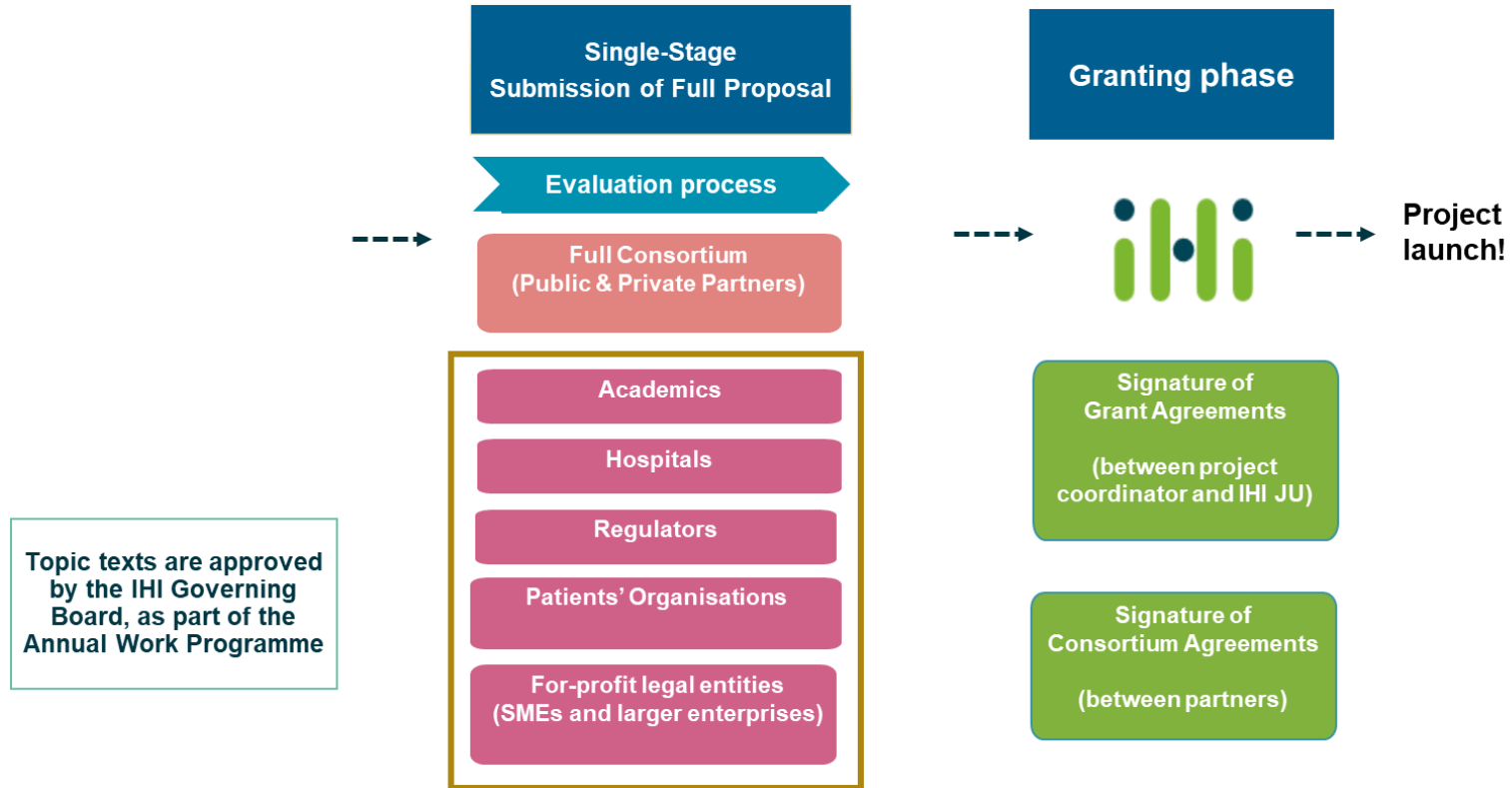


- **IKAA** - In-kind contributions to Additional Activities

Costs for implementing additional activities (NEW, no IKAA in IMI2)



Tipos de convocatorias: Convocatoria en una etapa



Convocatoria una etapa: ¿Quién puede recibir financiación?

Mismas reglas convocatorias ordinarias HE



Any legal entity established in a Member State, Associated Country or Low and Middle Income Countries

See Horizon Europe programme guide

NEW

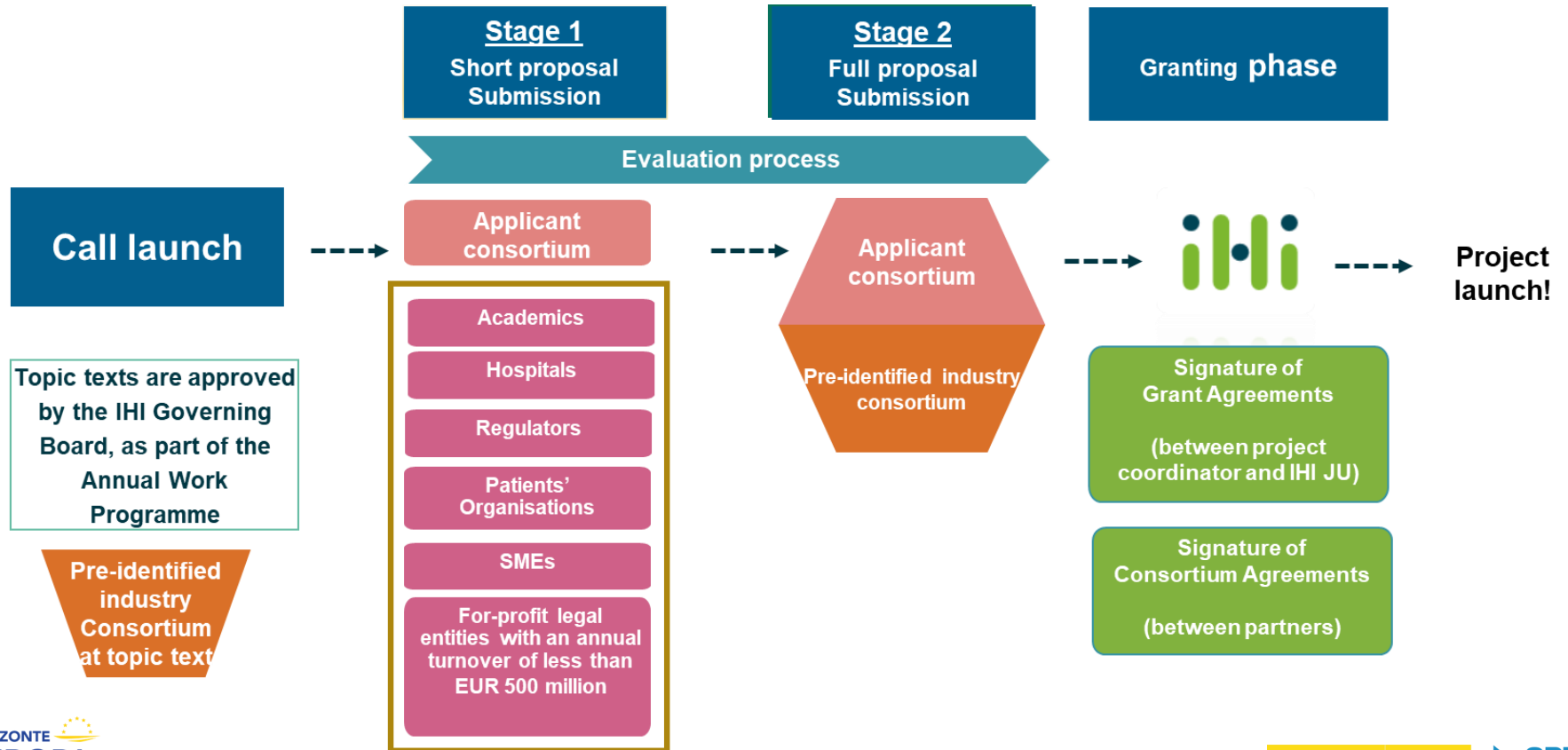


Third country to Horizon Europe legal entities are normally not eligible for receiving IHI funding

exceptional funding (recommended by experts evaluators) when it considers that their participation is essential



Tipos de convocatorias: Convocatoria en dos etapas



Convocatoria dos etapas: ¿Quién puede recibir financiación?



Non-profit organisations

For-profit legal entities
(SME and larger enterprises with an annual
turnover of less than
EUR 500 million)

NOT eligible for funding:

- Pre-identified Industry Consortium
- For-profit company:

(a) with an annual turnover of EUR 500 million or more
(b) directly or indirectly controlling/or being controlled by
for profit legal entities with an annual turnover of EUR 500
million or more.

Convocatoria 3: Abierta

Call 3 – HORIZON-JU-IHI-2022-03-single-stage

- **Financiación IHIJU:** 138 M€ - 5 *tópicos* (RIAs)
 - **Evaluación en una etapa**
 - **Apertura:** 13 diciembre 2022 **Cierre:** 15 marzo 2023
- Topic 1: **Screening platform and biomarkers** for prediction and prevention of diseases of unmet public health need
 - Topic 2: **Patient-generated evidence** to improve outcomes, support decision making, and accelerate innovation
 - Topic 3: Combining **hospital interventional approaches** to improve patient outcomes and increase hospital efficiency
 - Topic 4: Strengthening the European translational research ecosystem for **advanced therapy medicinal products (ATMPs) for rare diseases**
 - Topic 5: **Digital health technologies** for the prevention and personalised management of **mental disorders** and their long-term health consequences



innovative health initiative

Apply for funding

Shape our future research

Projects and results

Resources for projects

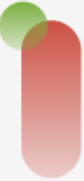
News & events

Abc

Home > [About the Initiative](#) > IHI call 3

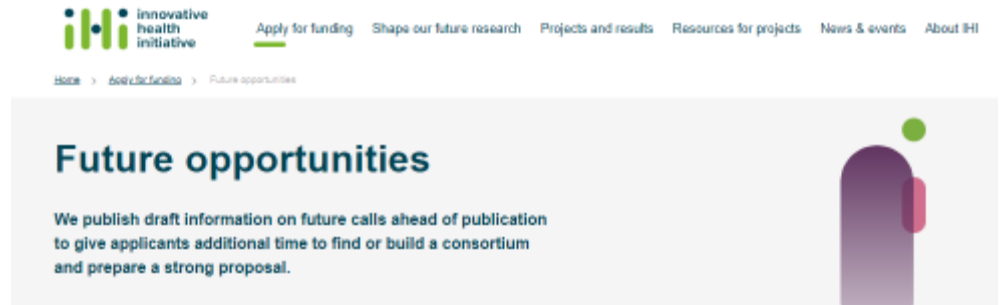
IHI call 3

IHI call 3 is a single-stage call with topics on diseases of unmet public health need, rare diseases, mental health, hospital efficiencies, and patient-generated evidence.



Convocatoria 4: Publicado borrador

- Evaluación en dos etapas
- Fechas apertura y cierre: por confirmar
- Presupuesto previsto: 12,9 M€
- Topics previstos:



- **Topic 1:** Expanding **translational knowledge in minipigs**: a path to reduce and replace non-human primates in non-clinical safety assessment
- **Topic 2: Patient-centric blood sample collection** to enable decentralised clinical trials and improve access to healthcare

Documentación específica IHI

Call documents

Guías y plantillas específicas

Guidance, templates and links for people planning on applying to be part of an IHI project.

Key documents and links

Before preparing your proposal, we recommend you read the [legislation creating IHI](#), the [IHI Strategic Research and Innovation Agenda](#) and the [annual work programme](#) to ensure you understand IHI, its goals, and how it works.

- [IHI guide for applicants](#) (last update 06/07/22) – this guide is designed to assist you in preparing and submitting your proposal.
- [Frequently asked questions](#)
- [IHI guidelines for in-kind contributions to additional activities \(IKAA\)](#) (last update 07/07/22)
- All proposals must be submitted via the [Funding and Tenders Portal](#).

<https://www.ihl.europa.eu/apply-funding/call-documents>



Questions?

If you have any questions about the documents on this page, don't hesitate to get in touch with us.

Contact us

Plantillas de las propuestas

- Siguen la estructura de HE pero con algunas particularidades.
- Límite de paginas:
 - ❑ Propuesta completa (convocatoria una etapa y 2ª etapa convocatoria 2 etapas): 50 pag.
 - ❑ Propuesta corta (fase 1 convocatoria 2 etapas): 20 pag.



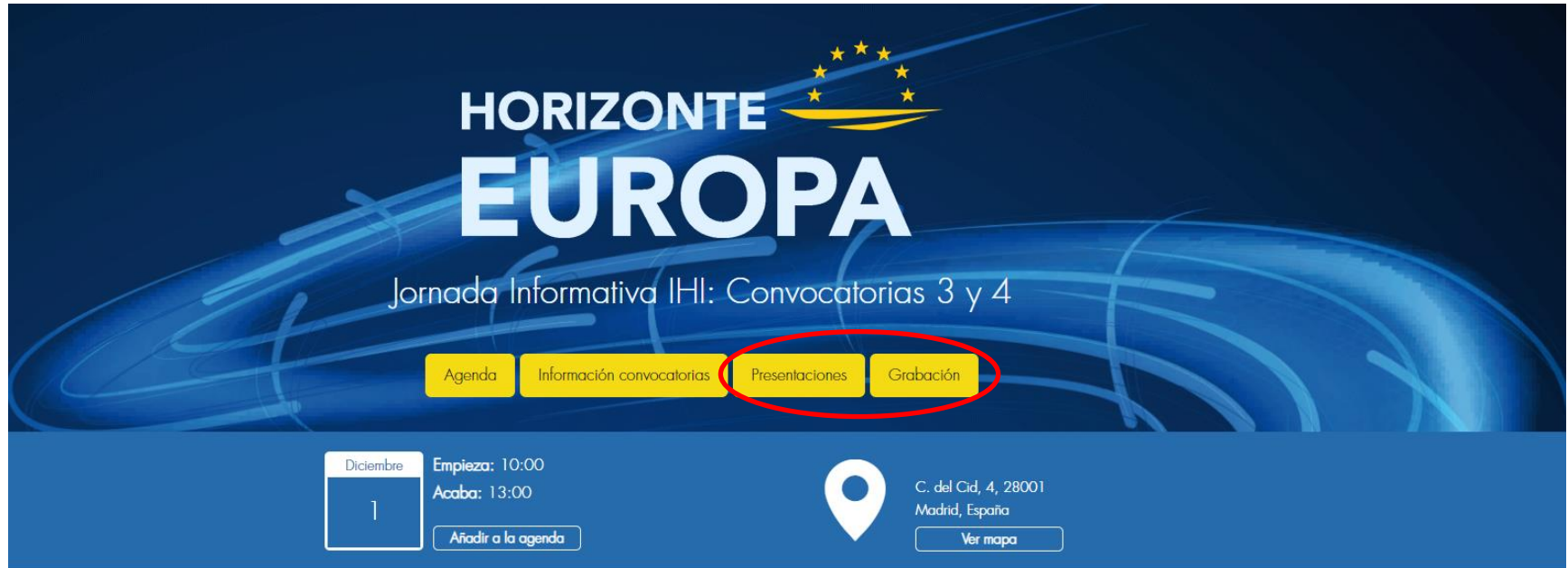
Jornadas Informativas Call 3 y Call 4

- Presentaciones y grabaciones disponibles (Reglas convocatoria, preparación ppto. y de cada topic)
 - ❑ Call 3: <https://www.ihl.europa.eu/news-events/events/ihl-call-days-call-3>
 - ❑ Call 4: <https://www.ihl.europa.eu/news-events/events/ihl-call-days-call-4> (Pendiente el webinario sobre reglas de la convocatoria. Fecha por confirmar)
- Plataforma de networking que estará abierta hasta el cierre de las convocatorias <https://ihl-call-days.ihl.b2match.io/>



Jornada Informativa nacional

Video y presentaciones disponibles



HORIZONTE EUROPA

Jornada Informativa IHI: Convocatorias 3 y 4

Agenda Información convocatorias **Presentaciones** Grabación

Diciembre
1

Empieza: 10:00
Acaba: 13:00

Añadir a la agenda

C. del Cid, 4, 28001
Madrid, España

Ver mapa

¿Quieres ser evaluador de IHI?

- Actualiza o crea tu perfil de experto en el Funding & Tenders Portal:
<https://ec.europa.eu/info/fundingtenders/opportunities/portal/screen/work-as-an-expert>
- Envía un email a la oficina IHI experts@ihi.europa.eu indicando número de experto (formato EX20XX1234567)



Apoyo en Salud HE: Equipo CDTI y NCPs



carolina.carrasco@cdti.es



marta.gomez@cdti.es



marta.dediego@cdti.es

Puntos Nacionales de Contacto



Carolina Carrasco

CDTI

carolina.carrasco@cdti.es

+34 91 581 55 62



Marta de Diego

CDTI

marta.dediego@cdti.es

+34 91 581 55 62



Marta Marin

FECYT, MCIN

marta.marin@fecyt.es

+34 91 425 09 09

@HorizonteEuropa
@CDTI_innovacion

www.horizonteeuropa.es
www.cdti.es



+ info sobre programas y ayudas
para la
internacionalización de la I+D+I española



@HorizonteEuropa - @CDTI_innovacion